


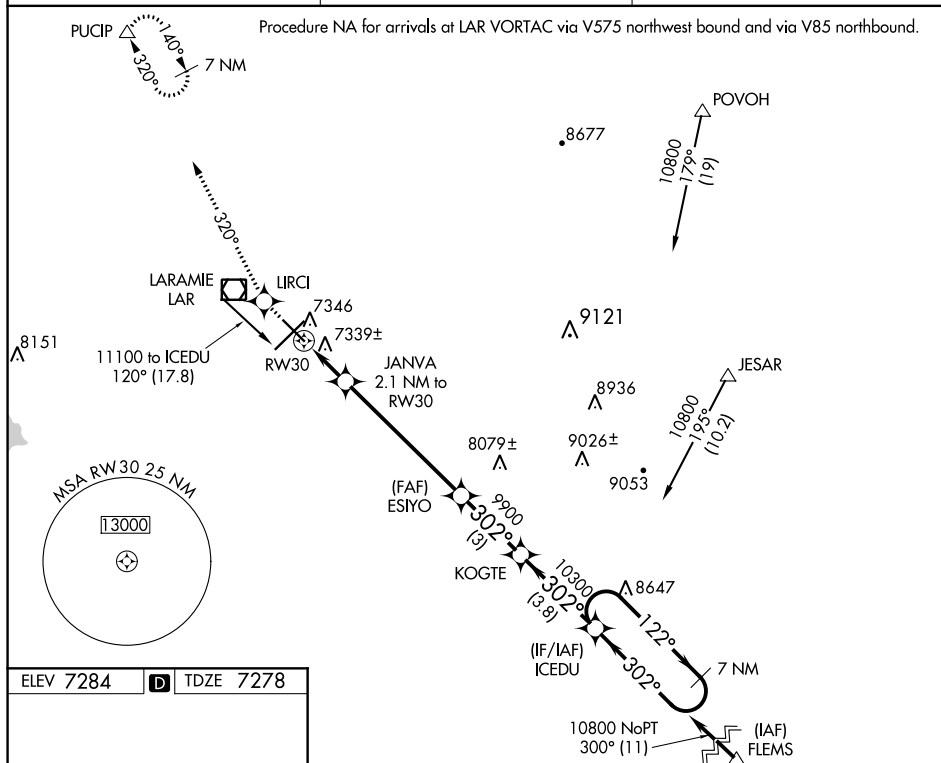


WAAS CH <b>53600</b> <b>W30A</b>	APP CRS <b>302°</b>	Rwy Idg TDZE Apt Elev	<b>6300</b> <b>7278</b> <b>7284</b>
--	------------------------	-----------------------------	---

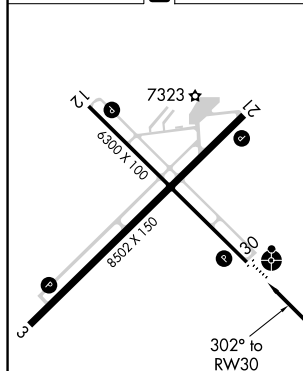
RNAV (GPS) RWY 30  
LARAMIE RGNL (LAR)

 Inop table does not apply. DME/DME RNP-0.3 NA.  -35°C For uncompensated Baro-VNAV systems, LNAV/VNAV NA below -29°C (-20°F) or above 35°C (95°F).	ODALS 	MISSED APPROACH: Climb to 9400 direct LIRCI and via 320° track to PUCIP and hold.
--	--	---

ASOS <b>135.475</b>	DENVER CENTER <b>125.9 284.7</b>	UNICOM <b>123.05 (CTAF) 0</b>
------------------------	-------------------------------------	----------------------------------



ELEV 7284	<b>D</b>	TDZE 7278
-----------	----------	-----------



REIL Rwy 3, 12 and 21 **L**  
MIRL Rwy 3-21 and 12-30 **L**

9400 ↑	LURCI 	fr 320° △	PUCIP △	ICEDU 7 NM Holding Pattern
*RNAV only	JANVA 2.1 NM to RW30	ESIYO	KOGTE	
*0.9 NM to RW30	RW30		302° 10300	122° → 10800 ← 302°
GP 3.00" TCH 41'	7980	9900		
0.9 1.2 NM 5.8 NM 3 NM 3.8 NM				
CATEGORY	A	B	C	D
LPV DA	7528-1	250 (300-1)		
LN/VNAV VNAV DA	7629-1¼	351 (400-1¼)		
LN/VNAV MDA	7600-1	322 (400-1)		
CIRCLING	7660-1¼ 376 (400-1¼)	7740-1¼ 456 (500-1¼)	7740-1½ 456 (500-1½)	7840-2 556 (600-2)