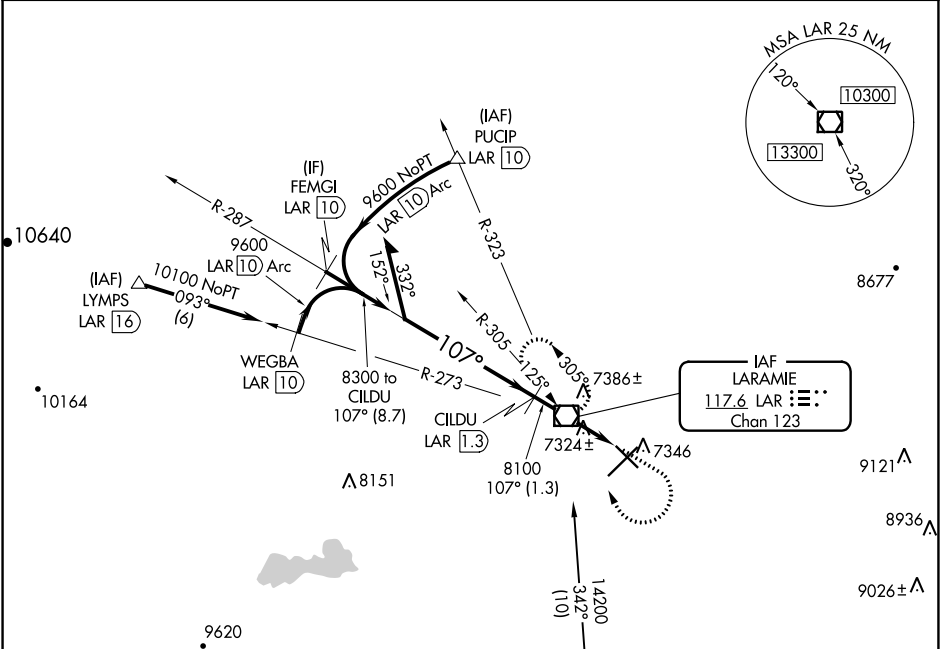


VOR/DME LAR <b>117.6</b> Chan <b>123</b>	APP CRS <b>107°</b>	Rwy Idg TDZE Apt Elev <b>6300</b> <b>7275</b> <b>7284</b>
--	------------------------	--

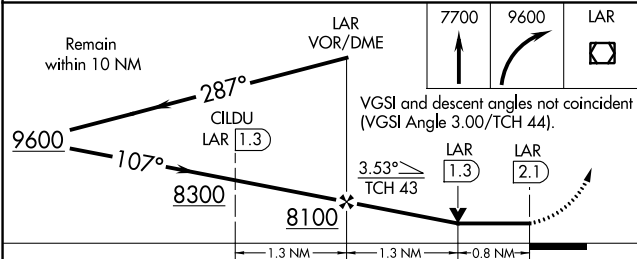
VOR/DME RWY 12  
LARAMIE RGNL (LAR)

-35°C	MISSED APPROACH: Climb to 7700 then climbing right turn to 9600 direct LAR VOR/DME and hold, continue climb-in-hold to 9600.	
-------	--	--

ASOS <b>135.475</b>	DENVER CENTER <b>125.9 284.7</b>	UNICOM <b>123.05 (CTAF)</b>
------------------------	-------------------------------------	--------------------------------



ELEV <b>7284</b> TDZE <b>7275</b>



CATEGORY	A	B	C	D
S-12	7580-1 305 (300-1)			
CIRCLING	7660-1 376 (400-1)	7740-1 456 (500-1)	7740-1½ 456 (500-1½)	7840-2 556 (600-2)

REIL Rwy 3, 12 and 21	
MIRL Rwy 3-21 and 12-30	

NW-1, 03 DEC 2020 to 31 DEC 2020

NW-1, 03 DEC 2020 to 31 DEC 2020