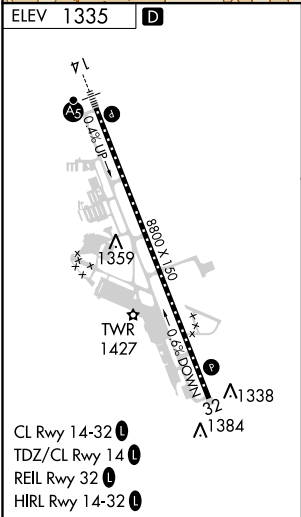
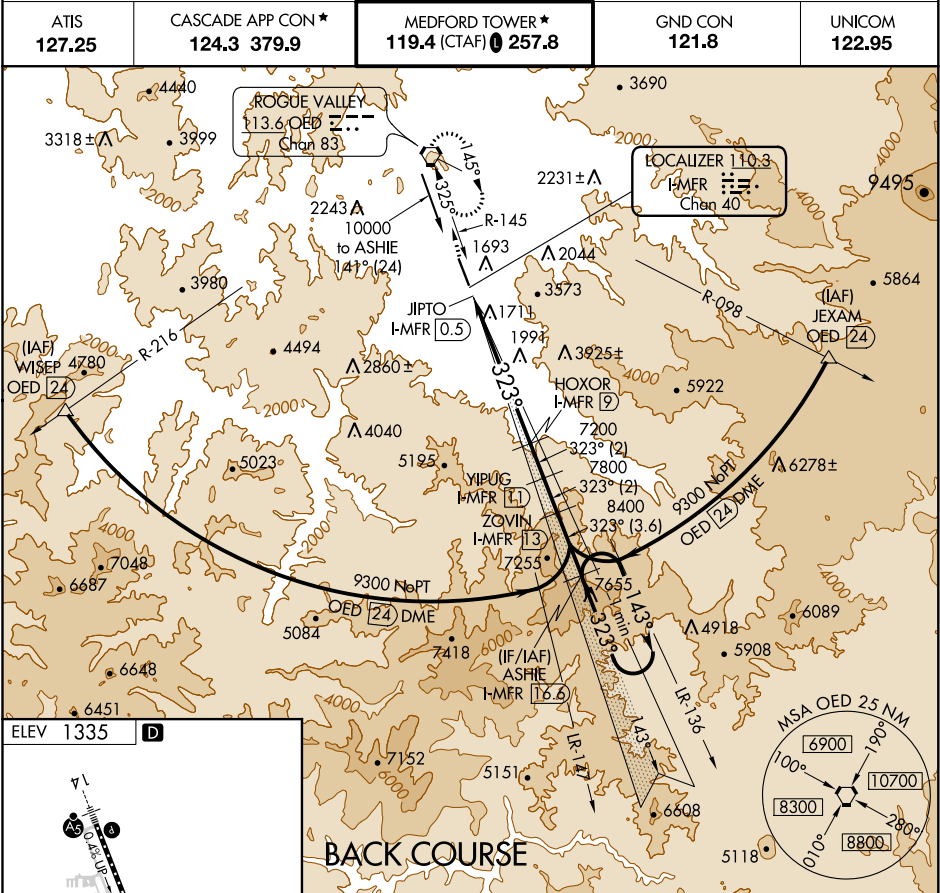


LOC/DME I-MFR <b>110.3</b> Chan <b>40</b>	APP CRS <b>323°</b>	Rwy Idg TDZE Apt Elev <b>N/A</b> <b>N/A</b> <b>1335</b>
---	------------------------	--

LOC/DME BC-B  
ROGUE VALLEY INTL-MEDFORD (MFR)

ATIS <b>127.25</b>	CASCADE APP CON * <b>124.3 379.9</b>	MEDFORD TOWER * <b>119.4 (CTAF) 257.8</b>	GND CON <b>121.8</b>	UNICOM <b>122.95</b>
Visibility reduction by helicopters NA. -3°C		MISSED APPROACH: Climb to 7600 direct OED VORTAC and hold, continue climb-in-hold to 7600.		



7600	OED	VSGI and descent angles not coincident (VSGI Angle 3.00/TCH 50).	ASHIE I-MFR 16.6	One Minute Holding Pattern
Disregard GS indications.				
JIPTO I-MFR 0.5	HOXOR I-MFR 9	YIPUG I-MFR 13	ZOVIN I-MFR 16.6	9300
7200	7800	8400	143°	323°
CL Rwy 14-32	TDZ/CL Rwy 14	REIL Rwy 32	HIRL Rwy 14-32	
CATEGORY A 3540-1 2205 (2300-1 1/4) B 3540-1 2205 (2300-1 1/2) C 3540-3 2205 (2300-3) D				
CIRCLING				

NW-1, 03 DEC 2020 to 31 DEC 2020

NW-1, 03 DEC 2020 to 31 DEC 2020