

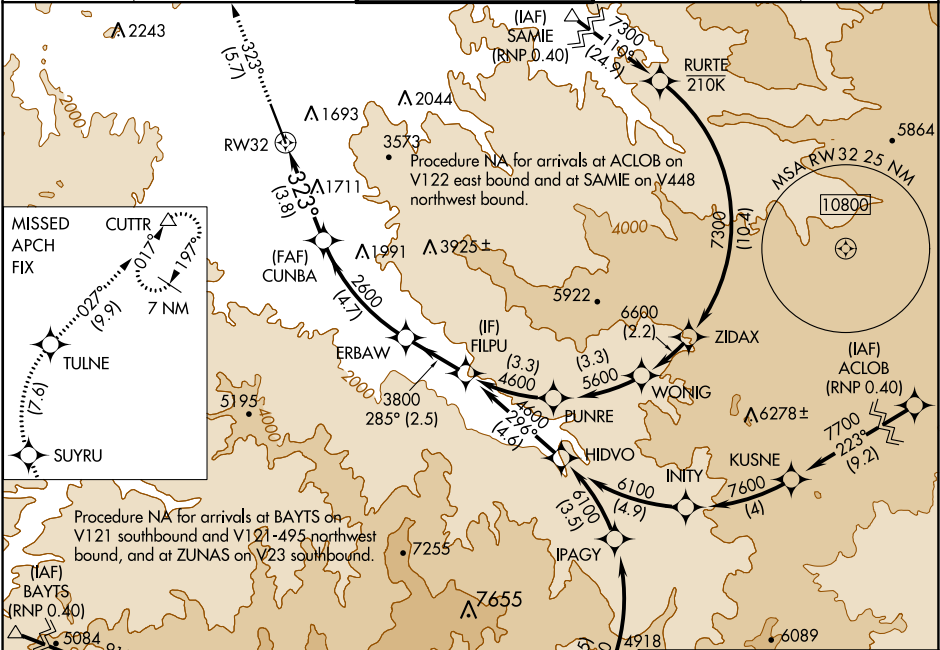
APP CRS	Rwy Idg	8800
323°	TDZE	1335
	Apt Elev	1335

RNAV (RNP) RWY 32

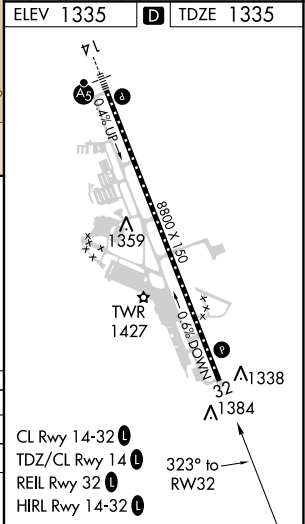
ROGUE VALLEY INTL-MEDFORD (MFR)

-3°C	GPS required. RF required. For uncompensated Baro-VNAV systems, procedure NA below -8°C (17°F) or above 45°C (113°F).	MISSED APPROACH: Climb to 9000 on track 323° to SUYRU, right turn to TULNE, then on track 027° to CUTTR and hold, continue climb-in-hold to 9000.
------	---	---

ATIS 127.25	CASCADE APP CON * 124.3 379.9	MEDFORD TOWER * 119.4 (CTAF) 0 257.8	GND CON 121.8	UNICOM 122.95
----------------	----------------------------------	---	------------------	------------------



9000	SUYRU	TULNE	CUTTR	VGS1 and RNAV glidepath not coincident.
↑ tr 323°				ERBAW
				FILPU
				285° 4600
				3800
				GP 3.00° TCH 50
				3.8 NM
				4.7 NM
				2.5 NM
CATEGORY	A	B	C	D
RNP 0.15 DA		1609-1	274 (300-1)	
RNP 0.30 DA		1661-1	326 (400-1)	
AUTHORIZATION REQUIRED				



NW-1, 03 DEC 2020 to 31 DEC 2020

NW-1, 03 DEC 2020 to 31 DEC 2020