

APP CRS <b>143°</b>	Rwy Idg TDZE <b>1303</b>	8800 <b>1335</b>
	Apt Elev	

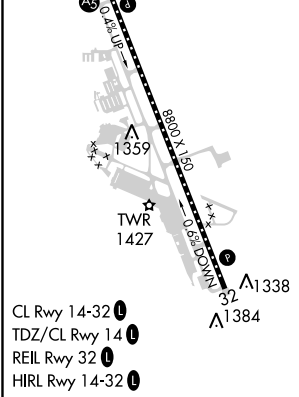
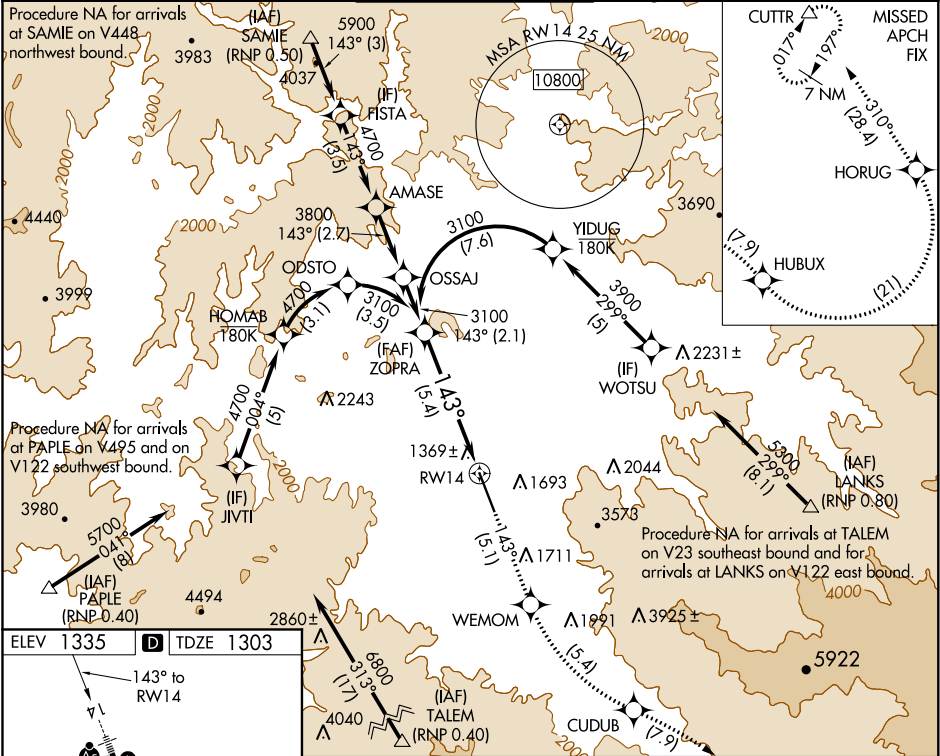
**RNAV (RNP) Z RWY 14**  
ROGUE VALLEY INTL-MEDFORD (MF'R)

**GPS required. RF required.** For uncompensated Baro-VNAV systems, procedure NA below -8°C (17°F) or above 46°C (115°F). For inop MALSR, increase RNP 0.30 DA\* all Cats visibility to RVR 6000, increase RNP 0.30 DA all Cats visibility to 3.  
\* Missed approach requires minimum climb of 259 feet per NM to 8300.

**MALSR**

**MISSED APPROACH:** Climb to 9000 on track 143° to WEMOM, left turn to CUDUB, right turn to HUBUX, left turn to HORUG, then on track 310° to CUTTR and hold.

ATIS <b>127.25</b>	CASCADE APP CON* <b>124.3 379.9</b>	MEDFORD TOWER* <b>119.4 (CTAF) 0 257.8</b>	GND CON <b>121.8</b>	UNICOM <b>122.95</b>
-----------------------	--	---	-------------------------	-------------------------



Procedure Turn NA

3100

GP 3.00° TCH 58

9000

WEMOM

CUDUB

VGSI and RNAV glidepath not coincident (VGSI Angle 3.00/TCH 73)

143°

RWY 14

See planview for multiple IF locations.

5.4 NM

CATEGORY	A	B	C	D
RNP 0.30 DA*		1665/40	362 (400-3/4)	
RNP 0.30 DA		2131-2 1/2	828 (800-2 1/2)	

**AUTHORIZATION REQUIRED**

NW-1, 03 DEC 2020 to 31 DEC 2020

NW-1, 03 DEC 2020 to 31 DEC 2020