

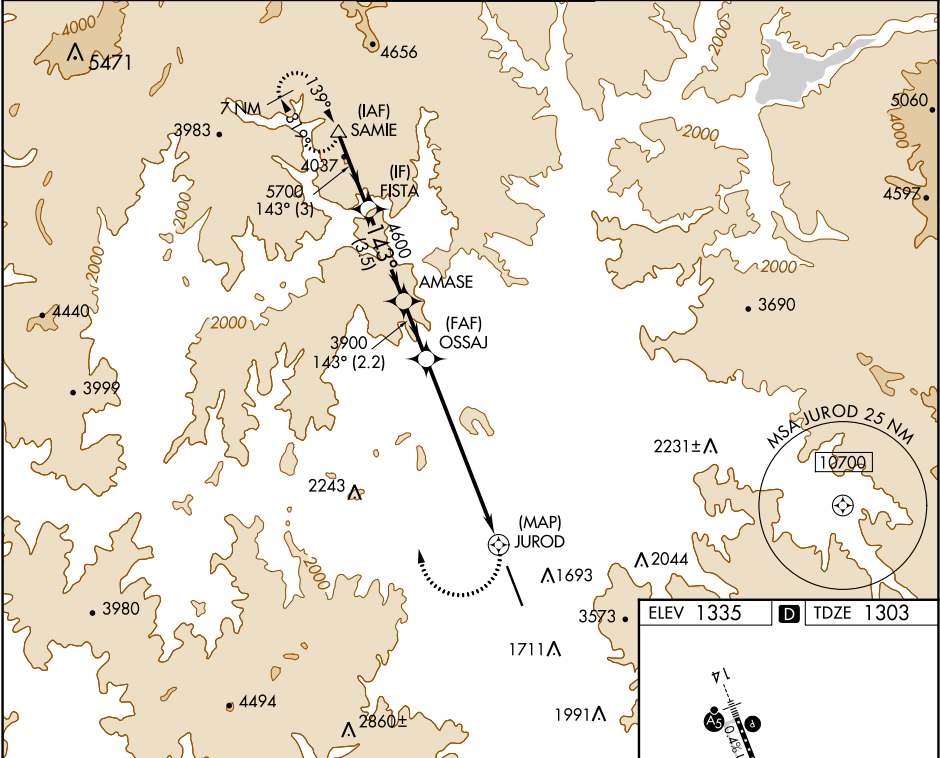
APP CRS	Rwy Idg	8800
143°	TDZE	1303
	Apt Elev	1335

RNAV (GPS) Y RWY 14  
ROGUE VALLEY INTL-MEDFORD (MFR)

RNP APCH.
When Medford altimeter setting not received, procedure NA. Inop table does not apply to Cats C and D.

MALSR	MISSED APPROACH: Climbing right turn 7000 direct SAMIE and hold, continue climb-in-hold to 7000. *Missed approach requires minimum climb of 334 feet per NM to 4800.
-------	---

ATIS 127.25	CASCADE APP CON * 124.3 379.9	MEDFORD TOWER * 119.4 (CTAF) 257.8	GND CON 121.8	UNICOM 122.95
----------------	----------------------------------	---------------------------------------	------------------	------------------



VGSI and descent angles not coincident (VGSI Angle 3.00/TCH 73).				
CATEGORY	A	B	C	D
LNAV MDA*	2600/40 1297 (1300-3/4)	2600/55 1297 (1300-1)	2600-3 1297 (1300-3)	
LNAV MDA	2600/40 1297 (1300-3/4)	2600/55 1297 (1300-1)	3320-3 2017 (2000-3)	3460-3 2157 (2200-3)

ELEV 1335	TDZE 1303
CL Rwy 14-32 TDZ/CL Rwy 14 REIL Rwy 32 HIRL Rwy 14-32	