

WAAS CH 78412 W26A	APP CRS 254°	Rwy Idg 6301 TDZE 1487 Apt Elev 1497
--	------------------------	---

RNAV (GPS) RWY 26

EASTERN OREGON RGNL AT PENDLETON (PDT)

RNP APCH.

▼

⚠

⊞

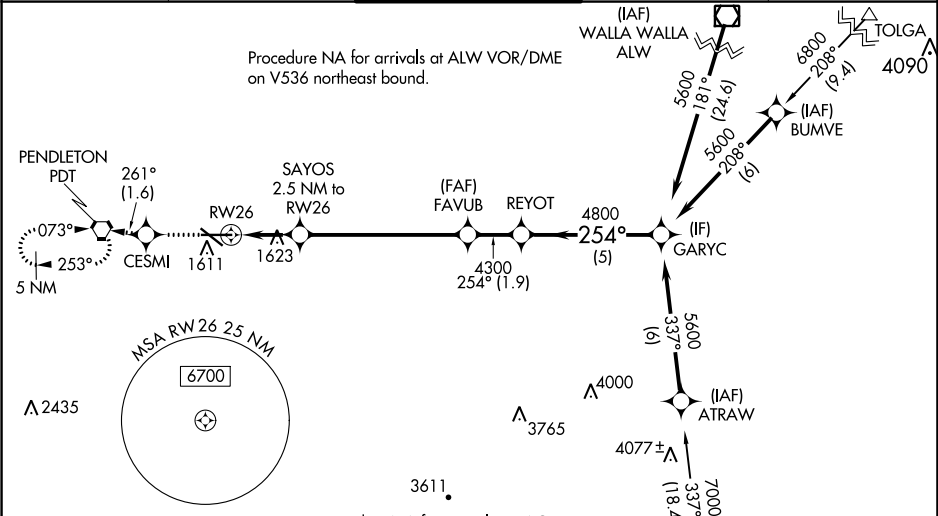
Circling to Rwy 11 NA at night. Baro-VNAV and VDP NA when using Walla Walla altimeter setting. For uncompensated Baro-VNAV systems, LNAV/VNAV NA below -17°C or above 54°C. When local altimeter setting not received, use Walla Walla altimeter setting and increase LPV DA to 1809 feet and all Cats visibility to RVR 2600; increase LNAV/VNAV DA to 1922 and all Cats visibility to RVR 4000; increase all MDA 140 feet and LNAV Cat C and D visibilities to RVR 5500, Circling Cat C visibility ½ SM, and Circling Cat D visibility ½ SM. For inop ALS, increase LNAV/VNAV all Cats visibility to RVR 4500. For inop ALS when using Walla Walla altimeter setting increase LPV all Cats visibility to RVR 5000.

RVR 1800 authorized with the use of FD or AP or HUD to DA(NA when using Walla Walla altimeter setting).

MALSR

MISSED APPROACH:
Climb to 4300 direct CESMI and on track 261° to PDT VORTAC and hold, continue climb-in-hold to 4300.

ASOS 118.325	CHINOOK APP CON★ 133.15 379.15	PENDLETON TOWER★ 119.7 (CTAF) 257.8	GND CON 121.9 257.8	UNICOM 122.95
------------------------	--	---	-------------------------------	-------------------------



ELEV 1497	D	TDZE 1487
------------------	----------	------------------

Procedure NA for arrivals at LACED on V4 southeast bound.

4300

CESMI

ir 261°

PDT

* LNAV only

SAYOS 2.5 NM to RW26

FAVUB 4300

REYOT

GARYC

254° to RW26

6301 X 150

5592 X 100.0

1601

1559

2320*

4300

5600

254°

4800

GP 3.00°

TCH 55

CATEGORY	A	B	C	D
LPV DA #	1687/24 200 (200-½)			
LNAV/VNAV DA	1800/24 313 (400-½)			
LNAV MDA	1880/24 393 (400-½)		1880/40 393 (400-¾)	
CIRCLING	1920-1 423 (500-1)	1960-1 463 (500-1)	1980-1½ 483 (500-1½)	2200-2¼ 703 (800-2¼)