

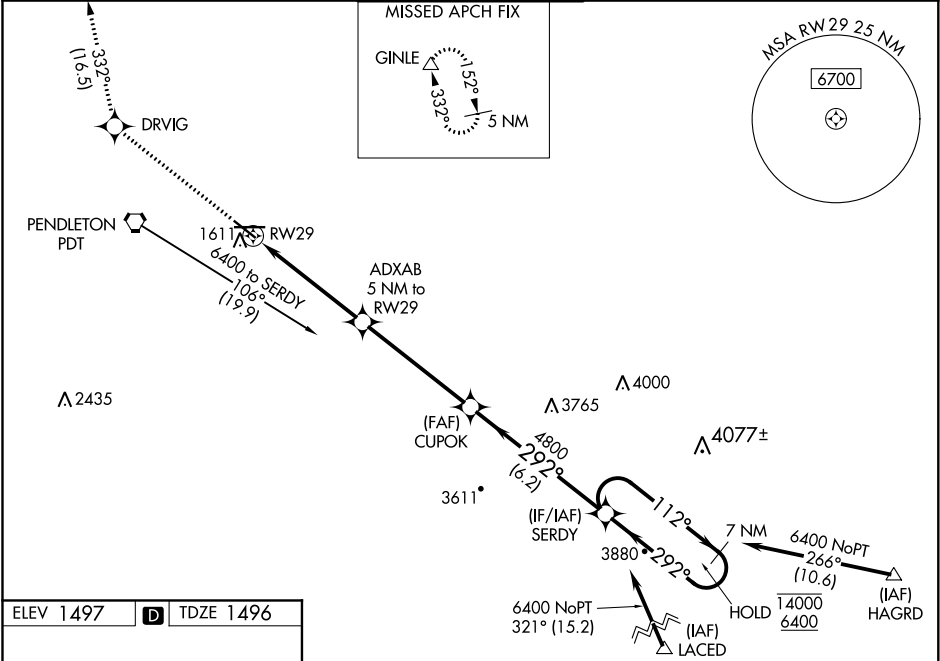
WAAS CH 42513 W29A	APP CRS 292°	Rwy Idg 5126 TDZE 1496 Apt Elev 1497
--	------------------------	---

RNAV (GPS) RWY 29

EASTERN OREGON RGNL AT PENDLETON (PDT)

RNP APCH.	Baro-VNAV and VDP NA when using Walla Walla altimeter setting. For uncompensated Baro-VNAV systems, LNAV/VNAV NA below -17°C or above 54°C. When local altimeter setting not received, use Walla Walla altimeter setting and increase all DA/MDA 120 feet, LNAV/VNAV all Cats visibility ¼ SM, LNAV Cat C visibility ¼ SM, Cat D visibility ⅓ SM, Circling Cat C visibility ¼ SM and Circling Cat D visibility ½ SM.	MISSED APPROACH: Climb to 5000 direct DRVIG and on track 332° to GINLE and hold.
-----------	--	---

ASOS 118.325	CHINOOK APP CON * 133.15 379.15	PENDLETON TOWER * 119.7 (CTAF) 257.8	GND CON 121.9 257.8	UNICOM 122.95
------------------------	---	--	-------------------------------	-------------------------



ELEV 1497	D	TDZE 1496
------------------	----------	------------------

5000	DRVIG	GINLE	VGSI and RNAV glidepath not coincident (VGSI Angle 3.00/TCH 84).	
↑	✱	△	CUPOK	SERDY
*LNAV only		ADXAB 5 NM to RW29	4800	112° → 14000 ← 292° 6400
1 NM to RW29		3160	4800	GP 3.00° TCH 55°
RW29		4.9 NM	6.2 NM	7 NM Holding Pattern
1		4 NM	6.2 NM	7 NM
CATEGORY	A	B	C	D
LPV DA	1747-1		251 (300-1)	
LNAV/VNAV DA	1801-1		305 (400-1)	
LNAV MDA	1880-1	384 (400-1)	1880-1½	384 (400-1½)
CIRCLING	1920-1 423 (500-1)	1960-1 463 (500-1)	1980-1½ 483 (500-1½)	2200-2¼ 703 (800-2¼)

REIL Rwy 11 and 29
MIRL Rwy 11-29
HIRL Rwy 8-26