


MOUNTAIN HOME, IDAHO JUL 15, 2019

LOC I-BRN <b><u>111.7</u></b>	APCH CRS <b>302°</b>	Rwy Idg <b>13,510</b> TDZE <b>2996</b> Arpt Elev <b>2996</b>	JAL-323 [USAF]	MOUNTAIN HOME AFB (KMUO)
----------------------------------	-------------------------	--	----------------	--------------------------

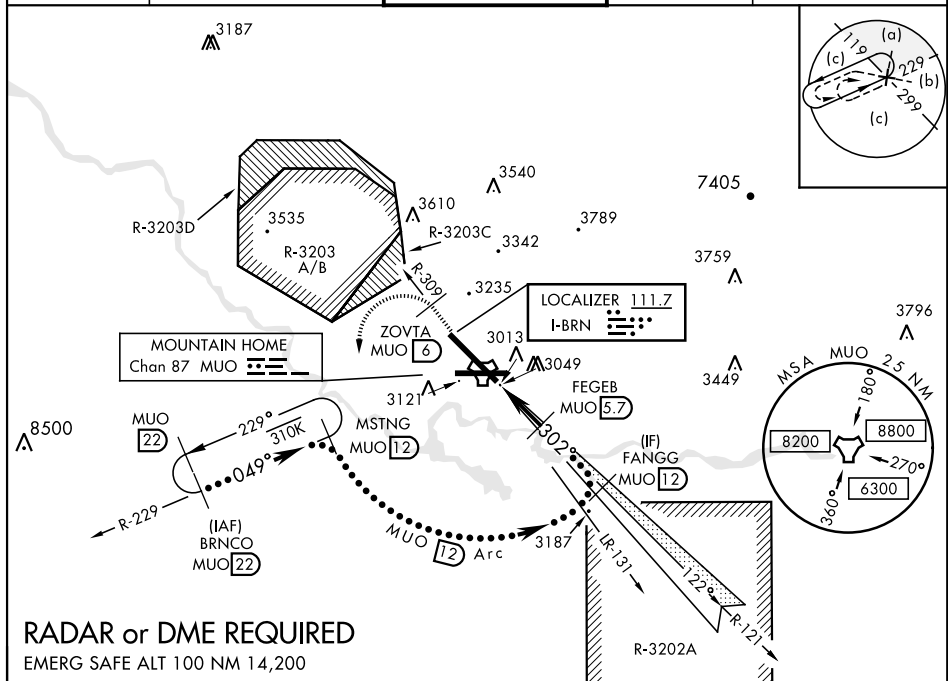
**▼** \* When ALS inop, increase CAT CDE RVR to 47 and vis to 1 mile.  
 \*\* When ALS inop, increase CAT CDE vis to 1½ miles.  
 \*\*\* Circling NA NE of Rwy 12-30.

ALSF-1



**MISSED APPROACH:** Climb to 10,000 via MUO R-309 to ZOVT/6 DME, turn left and intercept MUO R-229 to MSTNG/12 DME and hold. Continue climb in hold to 10,000.

ATIS 273.5	MOUNTAIN HOME APP CON 124.8 259.1	MOUNTAIN HOME TOWER 133.85 253.5	GND CON 120.5 275.8	CLNC DEL 127.1 290.425
---------------	--------------------------------------	-------------------------------------	------------------------	---------------------------



**RADAR or DME REQUIRED**

EMERG SAFE ALT 100 NM 14,200

**RADAR or DME REQUIRED**

EMERG SAFE ALT 100 NM 14,200

MOUNTAIN HOME, IDAHO 43°03'N-115°52'W MOUNTAIN HOME AFB (KMUO)

MOUNTAIN HOME, IDAHO 43°03'N-115°52'W MOUNTAIN HOME AFB (KMUO)

MOUNTAIN HOME, IDAHO 43°03'N-115°52'W MOUNTAIN HOME AFB (KMUO)

Amdt 3 18JUN20 11116 LOC VERMAY 20

Amdt 3 18JUN20

HI-ILS or LOC Y RWY 30