

LOC/DME I-PIH	APP CRS	Rwy Idg	9059
110.3	211°	TDZE	4452
Chan 40		Apt Elev	4452

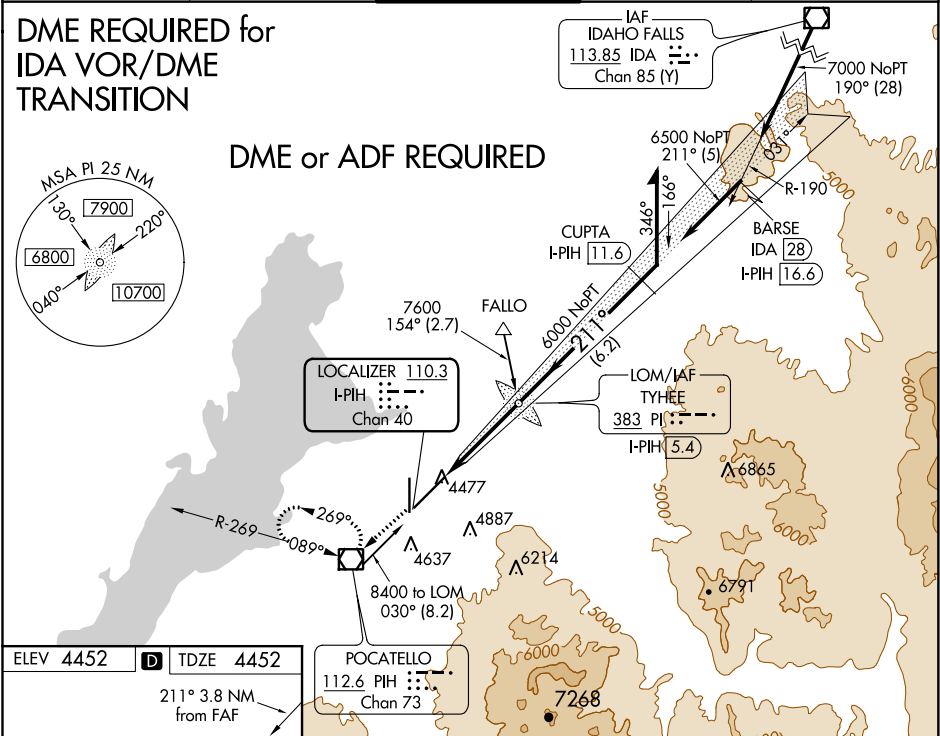
ILS or LOC RWY 21
POCATELLO RGNL (PIH)

⚠ Circling NA southeast of Rwy 3-21. For inoperative MALS, increase S-ILS-21 Cat E visibility to RVR 4000, and S-LOC-21 Cat E visibility to RVR 5000.
RVR 1800 authorized with the use of FD or AP or HUD to DA.

MALS

MISSED APPROACH: Climb to 7400 direct PIH VOR/DME, continue climb via PIH VOR/DME R-269, then right turn direct PIH VOR/DME and hold.

ATIS 135.625	SALT LAKE CENTER 128.35 239.25	POCATELLO TOWER ★ 119.1 (CTAF) 257.8	GND CON 121.9	UNICOM 122.95
-----------------	-----------------------------------	---	------------------	------------------



ELEV 4452	TDZE 4452
211° 3.8 NM from FAF	
7400 PIH	PIH TYHEE LOM* I-PIH 5.4
PIH R-269	
Use I-PIH DME when on LOC course.	
I-PIH 1.6	5715
3.8 NM	
031°	211° 7600
6000	GS 3.00° TCH 56
VGSi and ILS glidepath not coincident (VGSi Angle 3.00/TCH 52).	
CATEGORY	A B C D E
S-ILS 21 #	4652/24 200 (200-½)
S-LOC 21	4740/24 288 (300-½) 4740/40 288 (300-¾)
CIRCLING	4820-1 368 (400-1) 4920-1 468 (500-1) 4920-1½ 468 (500-1½) 5020-2 568 (600-2)

NW-1, 03 DEC 2020 to 31 DEC 2020

NW-1, 03 DEC 2020 to 31 DEC 2020