

WAAS CH 97502 W03A	APP CRS 031°	Rwy Idg 9059 TDZE 4444 Apt Elev 4452
--	------------------------	---

RNAV (GPS) RWY 3

POCATELLO RGNL (PIH)

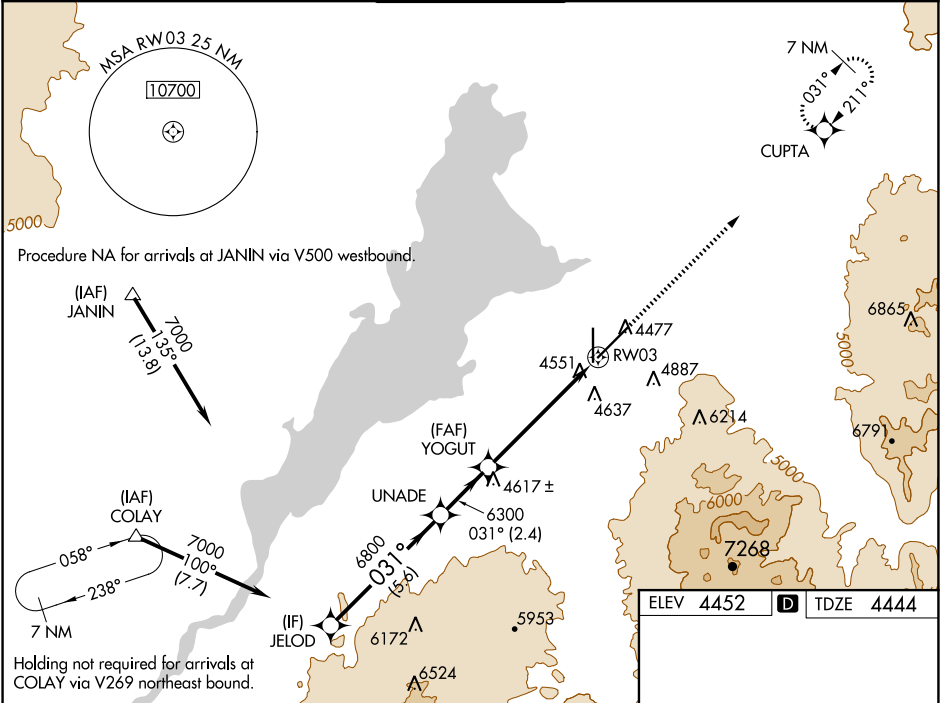
▼

▲

Circling NA southeast of Rwy 3-21. DME/DME RNP-0.3 NA.
Visibility reduction by helicopters NA. For uncompensated Baro-VNAV systems, LNAV/VNAV NA below -23°C (9°F) or above 40°C (104°F). If local altimeter setting not received, use Idaho Falls Rgnl altimeter setting and increase all DAs/MDAs 140 feet. Baro-VNAV NA when using Idaho Falls Rgnl altimeter setting.

MISSED APPROACH: Climb to 7300 direct CUPTA and hold.

ATIS 135.625	SALT LAKE CENTER 128.35 239.25	POCATELLO TOWER* 119.1 (CTAF) 0 257.8	GND CON 121.9	UNICOM 122.95
------------------------	--	--	-------------------------	-------------------------



JELOD		UNADE		YOGUT		RW03		CUPTA	
7000		6800		6300					
Procedure Turn NA									
GP 3.00° TCH 53									
		5.6 NM		2.4 NM		5.6 NM			
CATEGORY	A	B		C		D			
LPV DA	4694-1		250 (300-1)						
LNAV/VNAV DA	4978-1¾		534 (600-1¾)						
LNAV MDA	4880-1	436 (500-1)		4880-1¼	436 (500-1¼)		4880-1½	436 (500-1½)	
CIRCLING	4980-1	528 (600-1)		4980-1½	5020-2		568 (600-2)		

7150 X 100

9059 X 150

35

031° to RW03

HIRL Rwy 3-21

MIRL Rwy 17-35

REIL Rwy 3 and 17