

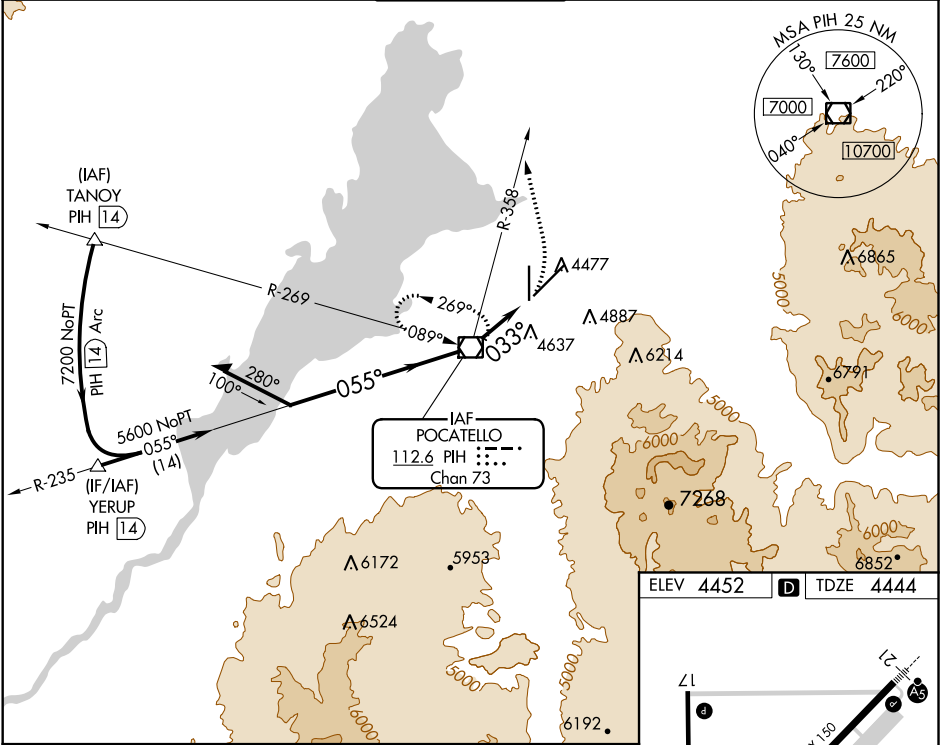
VOR/DME PIH	APP CRS	Rwy Idg	9059
112.6	033°	TDZE	4444
Chan 73		Apt Elev	4452

VOR RWY 3
POCATELLO RGNL (PIH)

⚠ Circling to Rwy 35 NA at night. When VGSI inop, Straight-In/Circling Rwy 3 procedure NA at night. Circling NA southeast of Rwy 3-21. Visibility reduction by helicopters NA. When local altimeter setting not received, use Idaho Falls altimeter setting and increase all MDA 140 feet, and increase visibility S-3 Cat C ½ mile and Circling Cat C ¼ mile.

MISSED APPROACH: Climbing left turn on heading 330° and PIH VOR/DME R-358 to 7600 then right turn direct PIH VOR/DME and hold.

ATIS 135.625	SALT LAKE CENTER 128.35 239.25	POCATELLO TOWER* 119.1 (CTAF) 0 257.8	GND CON 121.9	UNICOM 122.95
-----------------	-----------------------------------	--	------------------	------------------



Remain within 10 NM

7200 → 235° → 7800 (PIH VOR/DME)

7200 → 055° → 5600

VGSI and descent angles not coincident. (VGSI Angle 3.00/TCH 53)

5600 → 033° → 7600

3.53° TCH 53

3 NM

7600

hdg 330°

PIH R-358

PIH

ELEV 4452 TDZE 4444

7150 X 100

9059 X 150

TWR 4560

033° 3 NM from FAF

HIRL Rwy 3-21

MIRL Rwy 17-35

REIL Rws 3 and 17

FAF to MAP 3 NM

Knots	60	90	120	150	180
Min:Sec	3:00	2:00	1:30	1:12	1:00

CATEGORY	A	B	C	D
S-3	4940-1	496 (500-1)	4940-1 3/8 496 (500-1 3/8)	NA
CIRCLING	5000-1 548 (600-1)	5020-1 568 (600-1)	5060-1 3/4 608 (700-1 3/4)	NA

NW-1, 03 DEC 2020 to 31 DEC 2020

NW-1, 03 DEC 2020 to 31 DEC 2020