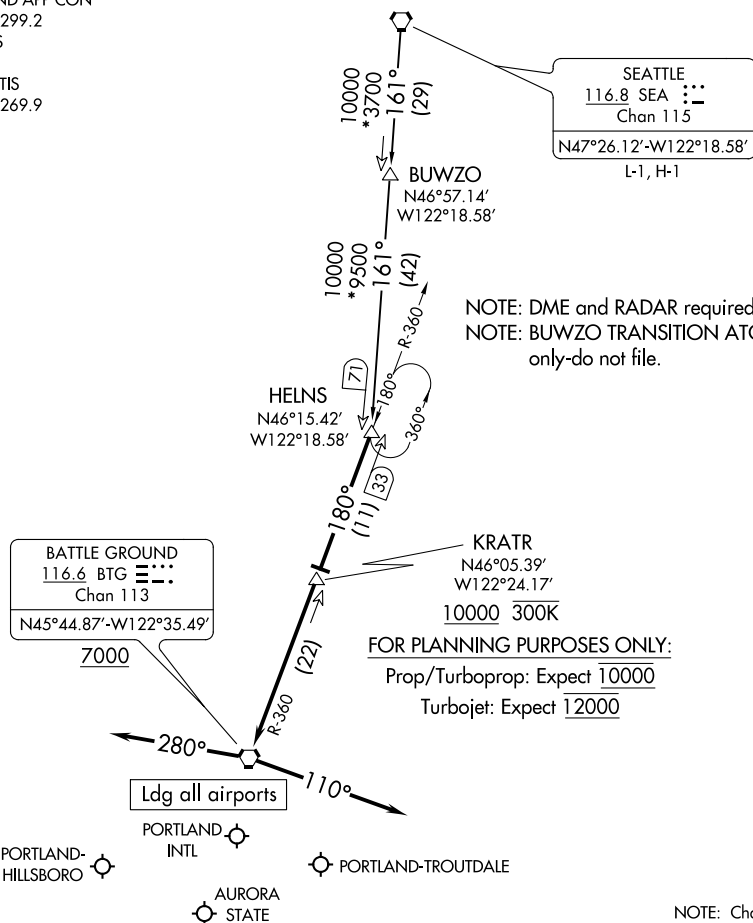


PORTLAND APP CON
124.35 299.2
HIO ATIS
127.65
PDX D-ATIS
128.35 269.9



NOTE: DME and RADAR required.
NOTE: BUWZO TRANSITION ATC assigned
only-do not file.

FOR PLANNING PURPOSES ONLY:

Prop/Turboprop: Expect $\overline{10000}$

Turbojet: Expect $\overline{12000}$

NOTE: Chart not to scale.

ARRIVAL ROUTE DESCRIPTION

BUWZO TRANSITION (BUWZO.HELNS6): From over BUWZO via SEA R-161 to HELNS. Thence. . .

SEATTLE TRANSITION (SEA.HELNS6): From over SEA VORTAC via SEA R-161 to HELNS. Thence, . . .

... from over HELNS on BTG VORTAC R-360 to cross KRATR at or above 10000, then as depicted to cross BTG VORTAC at or above 7000.

LANDING EAST: From BTG VORTAC heading 280°, expect RADAR vectors to final approach course.

LANDING WEST: From BTG VORTAC heading 110°, expect RADAR vectors to final approach course.