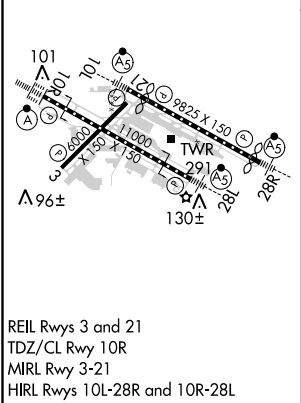
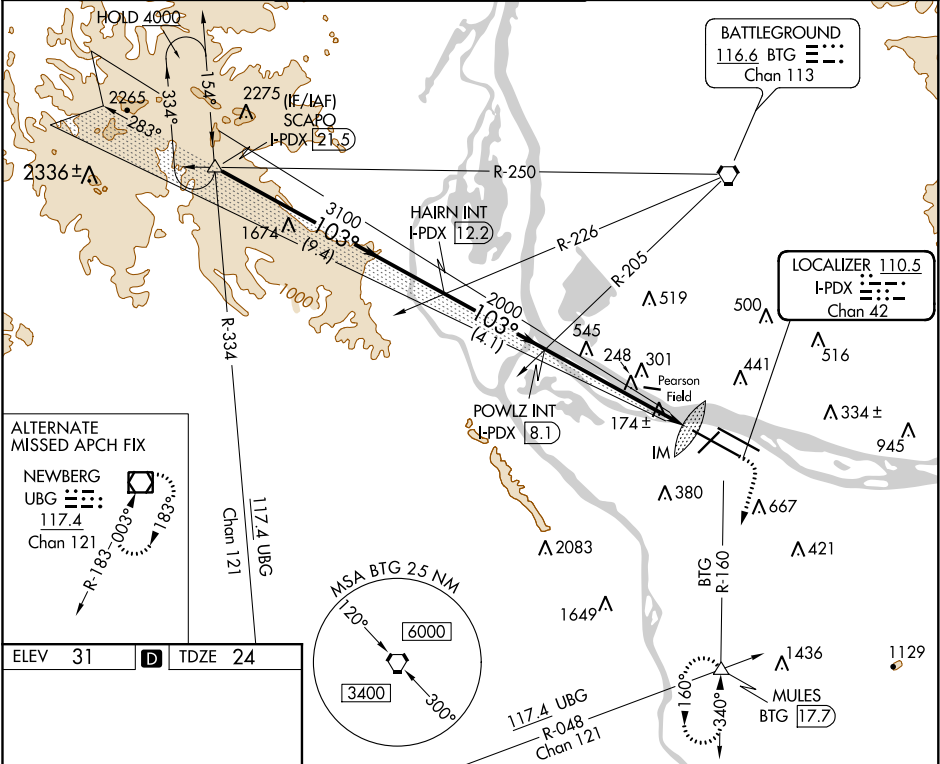


LOC/DME I-PDX	APP CRS	Rwy Idg	11000
110.5	103°	TDZE	24
Chan 42		Apt Elev	31

ILS RWY 10R (SA CAT I)
PORTLAND INTL (PDX)

<p>⚠ Simultaneous approach authorized. Requires specific OPSPEC, MSPEC, or LOA approval and use of HUD to DH.</p>	<p>ALSIF-2</p>	<p>MISSED APPROACH: Climb to 1100 then climbing right turn to 5000 on BTG VORTAC R-160 to MULES/BTG 17.7 DME and hold, continue climb-in-hold to 5000.</p>
--	----------------	--

D-ATIS 128.35 269.9	PORTLAND APP CON 124.35 299.2	PORTLAND TOWER Rwy 10L-28R 118.7 257.8 Rwys 3-21, 10R-28L 123.775 251.125	GND CON 121.9 348.6	CINC DEL 120.125 318.1	CPDLC
---------------------------	----------------------------------	---	------------------------	---------------------------	-------



SCAPO I-PDX 21.5	HAIRN INT I-PDX 12.2	POWLZ INT I-PDX 8.1	1100	5000	MULES
VGSI and ILS glidepath not coincident (VGSI Angle 3.00/TCH 71).					
GS 3.00° TCH 53					
4000 103° 3100 2000 2000 IM					
9.4 NM 4.1 NM 6 NM 10.49'					
CATEGORY	A	B	C	D	
S-ILS 10R	RA 157/14 150 DA 174				
SA CATEGORY I ILS-SPECIAL AIRCREW & AIRCRAFT CERTIFICATION REQUIRED					

NW-1, 03 DEC 2020 to 31 DEC 2020

NW-1, 03 DEC 2020 to 31 DEC 2020