

NW-1, 03 DEC 2020 to 31 DEC 2020

DEPARTURE ROUTE DESCRIPTION

TAKEOFF RUNWAYS 10L/R: Climb heading 103° to 540, then direct to RIVRR, then on depicted route to LAVAA, thence. . . .

TAKEOFF RUNWAY 28L: Climb heading 283° to 540, then direct PEGTY, then on depicted route to LAVAA, thence. . . .

TAKEOFF RUNWAY 28R: Climb heading 283°, intercept course 268° to PEGTY, then on depicted route to LAVAA, thence. . . .

. . . via (Transition), maintain assigned altitude, expect filed altitude 10 minutes after departure.

PENDLETON TRANSITION (LAVAA6.PDT)

YAKIMA TRANSITION (LAVAA6.YKM)

NOTE: Turbojet aircraft only.
NOTE: RADAR required for non-GPS equipped aircraft.
NOTE: RNAV 1.
NOTE: DME/DME/IRU or GPS required.

TAKEOFF MINIMUMS
Rwys 3, 21: NA - ATC

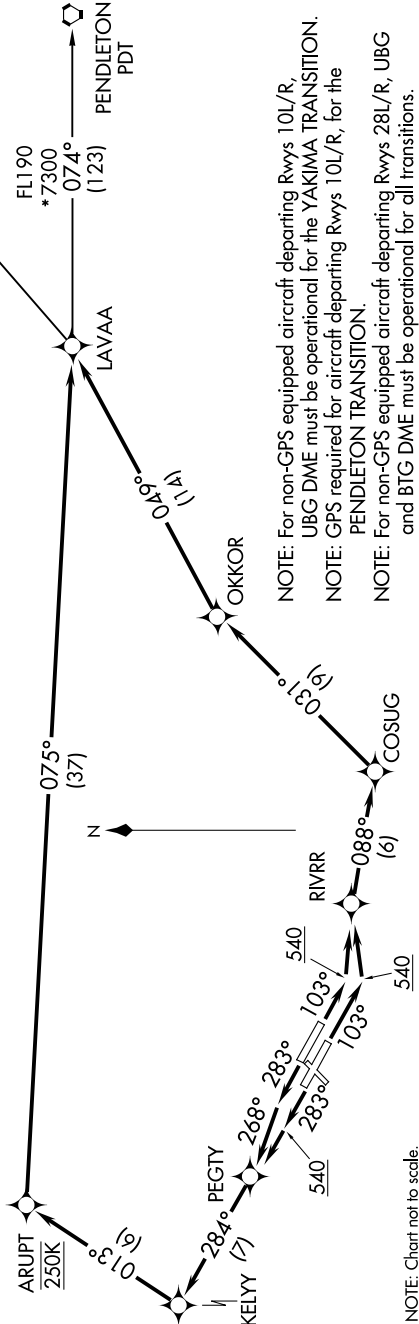
Rwys 10L/R, 28L/R: Standard with minimum climb of 500' per NM to 540, then minimum climb of 350' per NM to FL190.

D-ATIS
128.35 269.9
CLNC DEL
120.125 318.1
CPDLC
GND CON
121.9 348.6
PORTLAND TOWER
118.7 257.8 (Rwy 10L-28R)
123.775 251.125 (Rwys 3-21, 10R-28L)
PORTLAND DEP CON
124.35 299.2

YAKIMA
YKM

AL-330 (FAA)

PORTLAND INTL (PDX)
PORTLAND, OREGON



NOTE: For non-GPS equipped aircraft departing Rwys 10L/R, UBG DME must be operational for the YAKIMA TRANSITION.
NOTE: GPS required for aircraft departing Rwys 10L/R, for the PENDLETON TRANSITION.
NOTE: For non-GPS equipped aircraft departing Rwys 28L/R, UBG and BTG DME must be operational for all transitions.

NW-1, 03 DEC 2020 to 31 DEC 2020