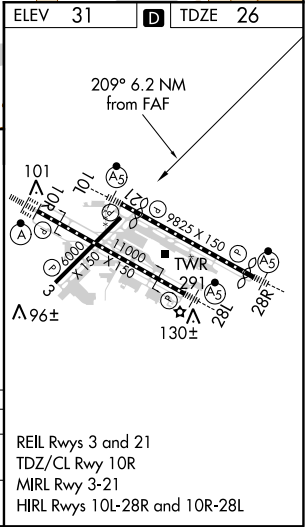
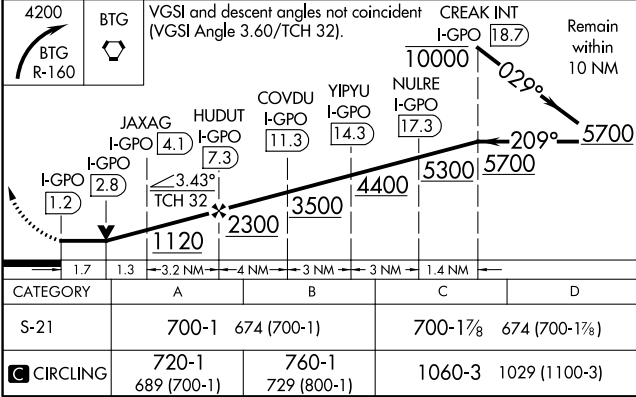
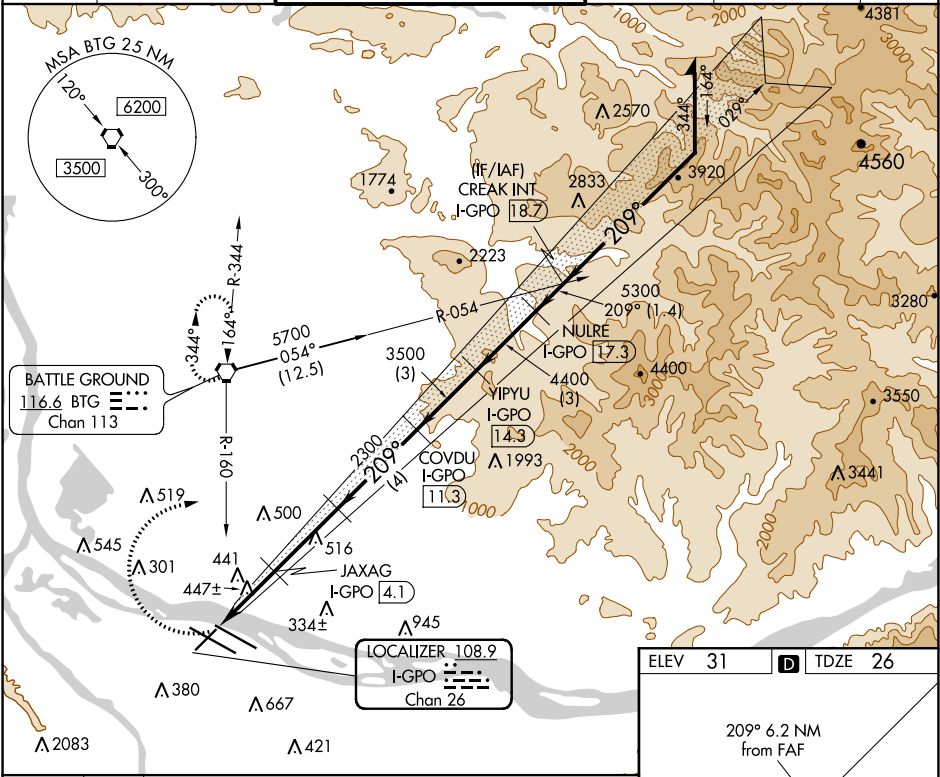


LOC/DME I-GPO	APP CRS	Rwy Idg	6000
108.9	209°	TDZE	26
Chan 26		Apt Elev	31

LOC/DME RWY 21
PORTLAND INTL (PDX)

<p>▼ Helicopter visibility reduction below ¾ SM NA.</p>	<p>MISSED APPROACH: Climbing right turn to 4200 on BTG VORTAC R-160 to BTG VORTAC and hold, continue climb-in-hold to 4200.</p>
--	---

D-ATIS 128.35 269.9	PORTLAND APP CON 124.35 299.2	PORTLAND TOWER Rwy 10L-28R 118.7 257.8	Rwys 3-21, 10R-28L 123.775 251.125	GND CON 121.9 348.6	CLNC DEL 120.125 318.1	CPDLC
---------------------------	----------------------------------	--	---------------------------------------	------------------------	---------------------------	-------



NW-1, 03 DEC 2020 to 31 DEC 2020

NW-1, 03 DEC 2020 to 31 DEC 2020