

APP CRS	Rwy Idg	<b>9290</b>
<b>283°</b>	TDZE	<b>31</b>
	Apt Elev	<b>31</b>

RNAV (RNP) Y RWY 28R  
PORTLAND INTL (PDX)

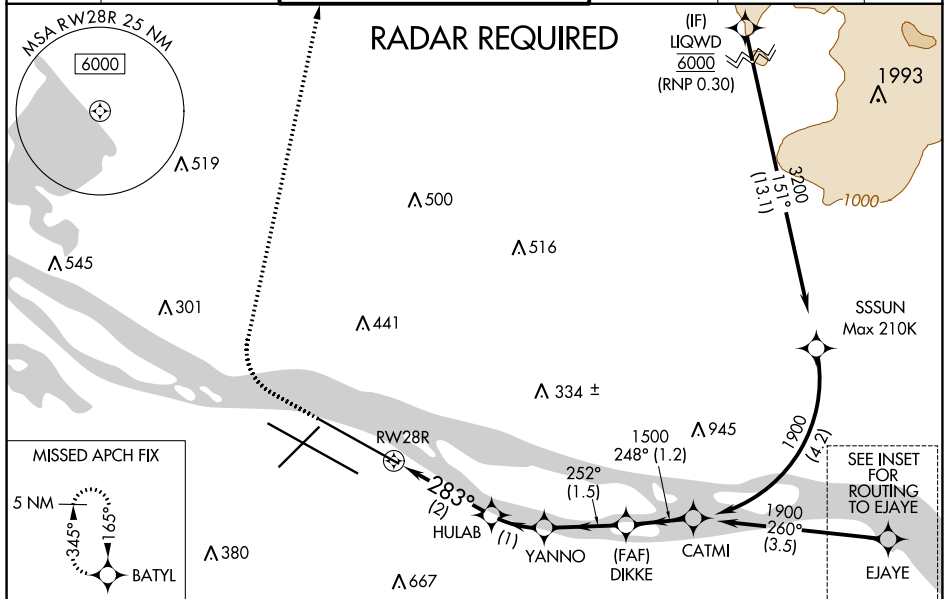
▼ For uncompensated Baro-VNAV systems, procedure NA below -7°C (20°F) or above 54°C (130°F). For inop MALS, increase RNP 0.20 all Cats visibility to 1 1/4 mile, and increase RNP 0.30 all Cats visibility to 1 1/8 mile. RF required. GPS required. Use of FD or AP providing RNAV track guidance required during simultaneous operations. Simultaneous approach authorized with Rwy 28L.

MALSR

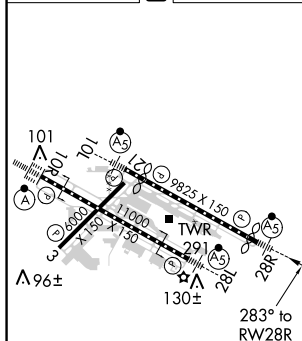


**MISSED APPROACH:**  
Climb to 600 then climbing  
right turn to 4400 direct  
BATYL and hold, continue  
climb-in-hold to 4400.

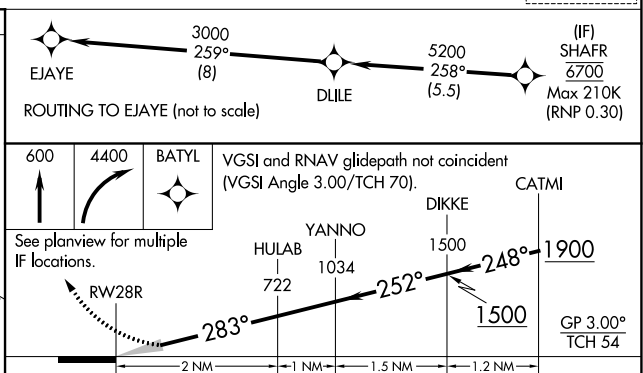
D-ATIS <b>128.35</b> <b>269.9</b>	PORTLAND APP CON <b>124.35 299.2</b>	PORTLAND TOWER Rwy 10L-28R <b>118.7 257.8</b>	Rwys 3-21, 10R-28L <b>123.775 251.125</b>	GND CON <b>121.9 348.6</b>	CLNC DEL <b>120.125 318.1</b>	CPDLC
---	---	---	--	-------------------------------	----------------------------------	-------



ELEV	31	<b>D</b>	TDZE	31
------	----	----------	------	----



REIL Rwy 3 and 21  
TDZ/CL Rwy 10R  
MIRL Rwy 3-21  
HIRL Rwy 10L-28R and 10R-28L



CATEGORY	A	B	C	D
RNP 0.20 DA		403/40	372 (400-¾)	
RNP 0.30 DA		455/50	424 (500-1)	

**AUTHORIZATION REQUIRED**