

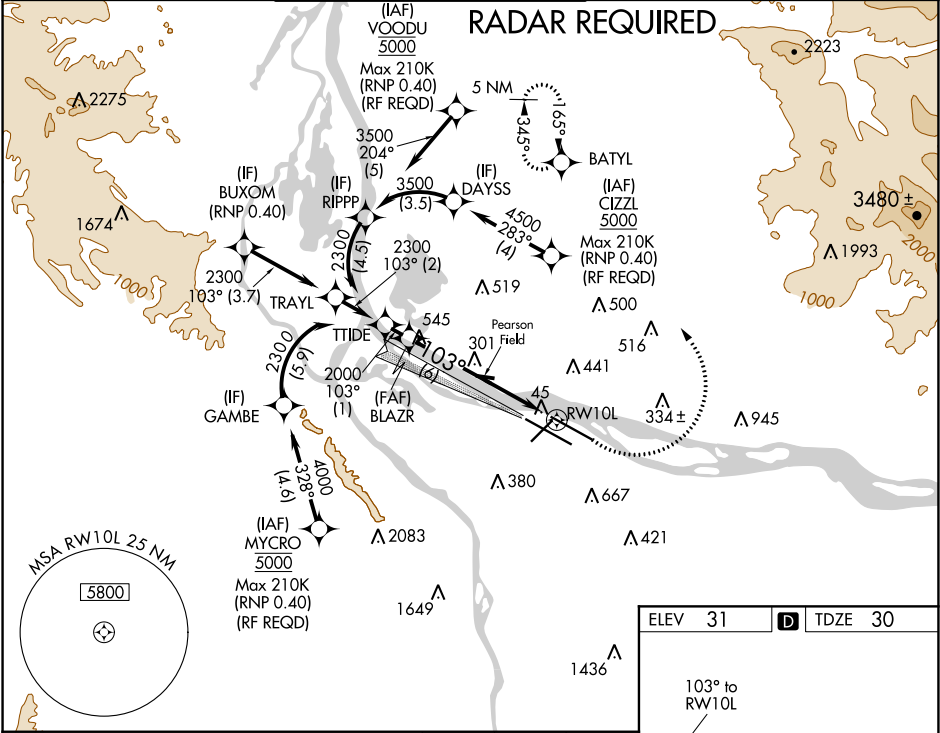
APP CRS 103°	Rwy Idg TDZE Apt Elev 8535 30 31	RNAV (RNP) Z RWY 10L PORTLAND INTL (PDX)	
------------------------	--	--	--

GPS required. For inop MALSR, increase RNP 0.30 all Cats visibility to RVR 5500. For uncompensated Baro-VNAV systems, procedure NA below -6°C (22°F) or above 54°C (130°F). Simultaneous approach authorized with Rwy 10R, except for arrivals at CIZZL, VOODU, and MYCRO. Use of FD or AP providing RNAV track guidance required for simultaneous operations.

MALSR

MISSED APPROACH: Climb to 800 then climbing left turn to 4400 direct BATYL and hold, continue climb-in-hold to 4400.

D-ATIS 128.35 269.9	PORTLAND APP CON 124.35 299.2	PORTLAND TOWER Rwy 10L-28R 118.7 257.8 Rwys 3-21, 10R-28L 123.775 251.125	GND CON 121.9 348.6	CLNC DEL 120.125 318.1	CPDLC
---	---	---	-------------------------------	----------------------------------	-------



BLAZR

2000

103°

RWY 10L

GP 3.00°
TCH 49

6 NM

See Planview for multiple IF locations.

800

4400

BATYL

CATEGORY	A	B	C	D
RNP 0.30 DA	365/32 335 (400-%)			

AUTHORIZATION REQUIRED

REIL Rwys 3 and 21
TDZ/CL Rwy 10R
MIRL Rwy 3-21
HIRL Rwys 10L-28R and 10R-28L