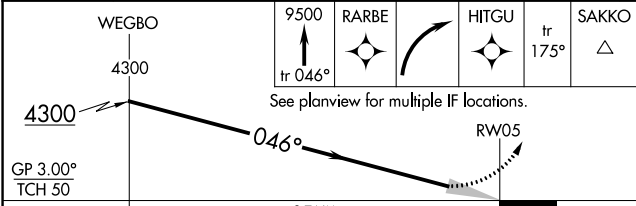
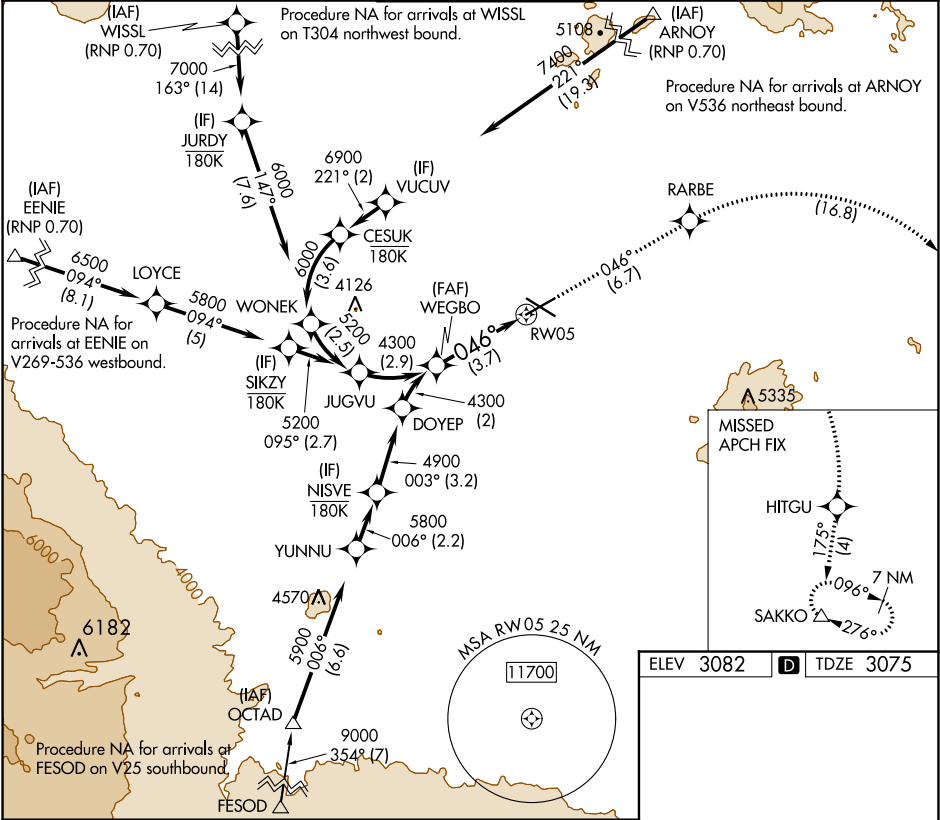


APP CRS	Rwy Idg	7038
046°	TDZE	3075
	Apt Elev	3082

RNAV (RNP) Z RWY 5  
ROBERTS FIELD (RDM)

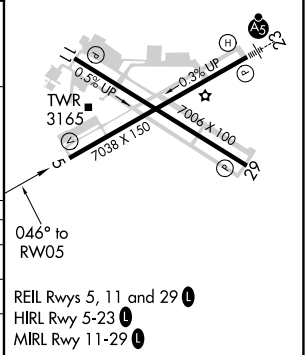
RNP AR APCH. RF required.	MISSED APPROACH: Climb to 9500 on track 046° to RARBE right turn to HITGU and on track 175° to SAKKO and hold, continue climb-in-hold to 9500.
For uncompensated Baro-VNAV systems, procedure NA below -20°C or above 53°C.	

ATIS 119.025	SEATTLE CENTER 126.15 269.475	REDMOND TOWER★ 124.5 (CTAF) 256.8	GND CON 121.8	UNICOM 122.95
-----------------	----------------------------------	--------------------------------------	------------------	------------------



CATEGORY	A	B	C	D
RNP 0.10 DA		3351-7/8	276 (300-7/8)	
RNP 0.30 DA		3574-1 1/8	499 (500-1 1/8)	

AUTHORIZATION REQUIRED



NW-1, 03 DEC 2020 to 31 DEC 2020

NW-1, 03 DEC 2020 to 31 DEC 2020