

WAAS CH <b>82514</b> <b>W23A</b>	APP CRS <b>226°</b>	Rwy Idg TDZE Apt Elev <b>7031</b> <b>3067</b> <b>3080</b>
--	------------------------	--

RNAV (GPS) Y RWY 23

ROBERTS FIELD (RDM)

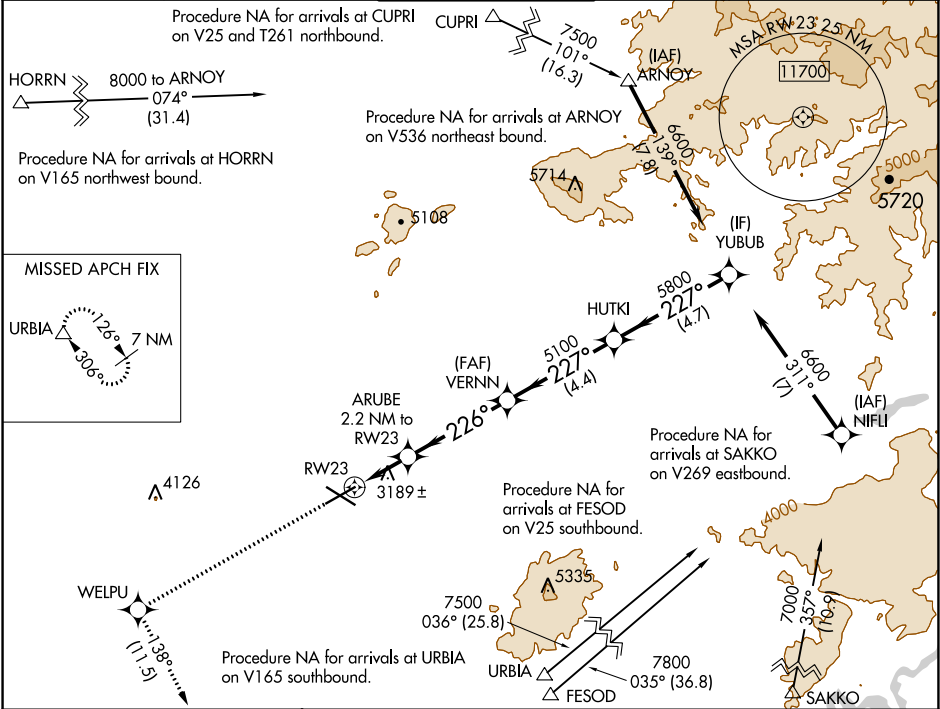
⚠

For uncompensated Baro-VNAV systems, LNAV/VNAV NA below -20°C (-4°F) or above 53°C (128°F).  
DME/DME RNP-0.3 NA. For inop ALS, increase LNAV/VNAV all Cats visibility to ¾ SM and LNAV Cat C/D visibility to 1 SM.

MALSR

MISSED APPROACH: Climb to 8500 direct WELPU and on track 138° to URBIA and hold, continue climb-in-hold to 8500.

ATIS <b>119,025</b>	SEATTLE CENTER <b>126.15 269,475</b>	REDMOND TOWER★ <b>124.5 (CTAF) 0 256.8</b>	GND CON <b>121.8</b>	UNICOM <b>122.95</b>
------------------------	---	---	-------------------------	-------------------------



ELEV 3080	D	TDZE 3067	8500		WELPU	tr 138°	URBIA	VGSI and RNAV glidepath not coincident (VGSI Angle 3.00/TCH 51).				
			*LNAV only		ARUBE 2.2 NM to RW23		VERNN 5100	HUTKI	YUBUB 6600			
			*1.1 NM to RW23		*3800		5100	5800	5100			
			1.1 NM		1.1 NM		4.1 NM		4.4 NM		4.7 NM	
			A		B		C		D			
			LPV DA		3267-½		200 (200-½)					
<p>REIL Rlys 5, 11 and 29</p> <p>HIRL Rwy 5-23</p> <p>MIRL Rwy 11-29</p>			LNAV/VNAV DA		3383-⅝		316 (400-⅝)					
			LNAV MDA		3440-½		373 (400-½)		3440-¾		373 (400-¾)	
			CIRCLING		3540-1		3560-1		3640-1½		3760-2¼	
					460 (500-1)		480 (500-1)		560 (600-½)		680 (700-2¼)	