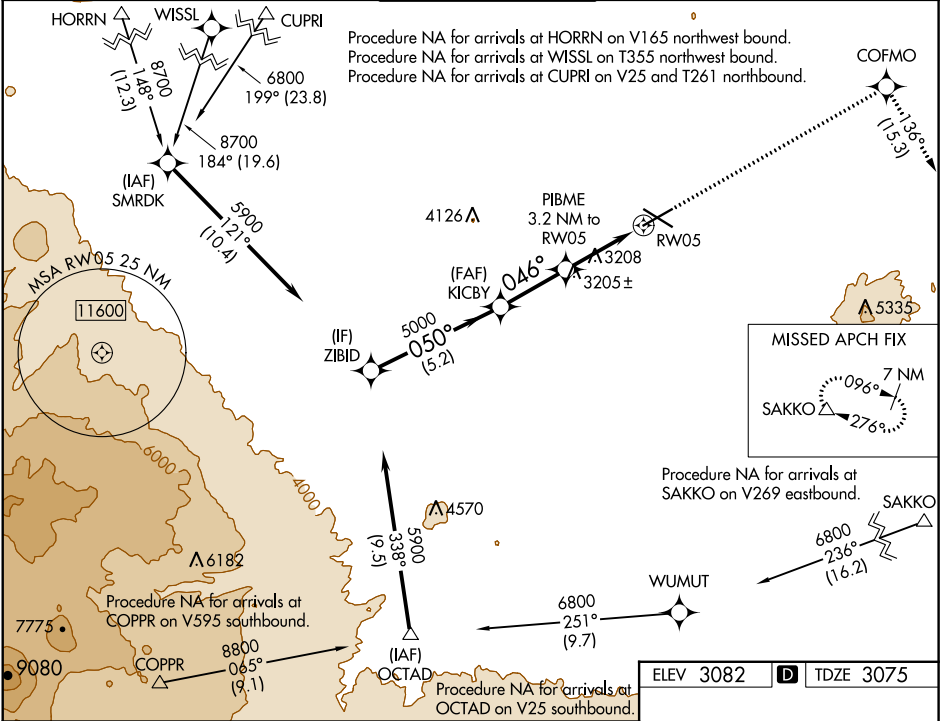









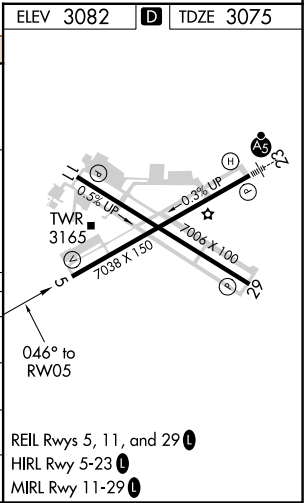
WAAS CH 70514 W05A	APP CRS 046°	Rwy Idg TDZE Apt Elev	7038 3075 3082
--	------------------------	-----------------------------	---

RNAV (GPS) Y RWY 5
ROBERTS FIELD (RDM)

RNP APCH.		MISSED APPROACH: Climb to 9500 direct COFMO and on track 136° to SAKKO and hold, continue climb-in-hold to 9500.		
For uncompensated Baro-VNAV systems, LNAV/VNAV NA below -22°C or above 54°C.				
ATIS 119.025	SEATTLE CENTER 126.15 269.475	REDMOND TOWER★ 124.5 (CTAF) 0 256.8	GND CON 121.8	UNICOM 122.95



ZIBID		KICBY		PIBME 3.2 NM to RW05		<div>9500</div> <div>↑</div>		<div>COFMO</div> <div></div>		<div>tr 136°</div> <div></div>		SAKKO	
5900		5000		*4140		*1.2 NM to RW05		RW05		*LNAV only			
GP 3.00° TCH 50													
5.2 NM		2.7 NM		2 NM		1.2 NM							
CATEGORY		A		B		C		D					
LPV DA		3275-3/4 200 (200-3/4)											
LNAV/ VNAV DA		3347-7/8 272 (300-7/8)											
LNAV MDA		3520-1		445 (500-1)		3520-1 3/8		445 (500-1 3/8)					
 CIRCLING		3540-1		3560-1		3640-1 1/2		3740-2					
		458 (500-1)		478 (500-1)		558 (600-1 1/2)		658 (700-2)					



NW-1, 03 DEC 2020 to 31 DEC 2020

NW-1, 03 DEC 2020 to 31 DEC 2020