

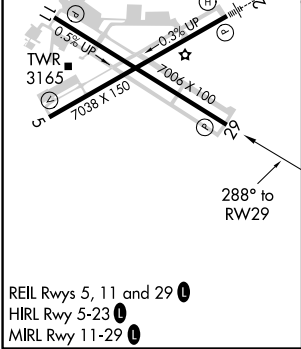
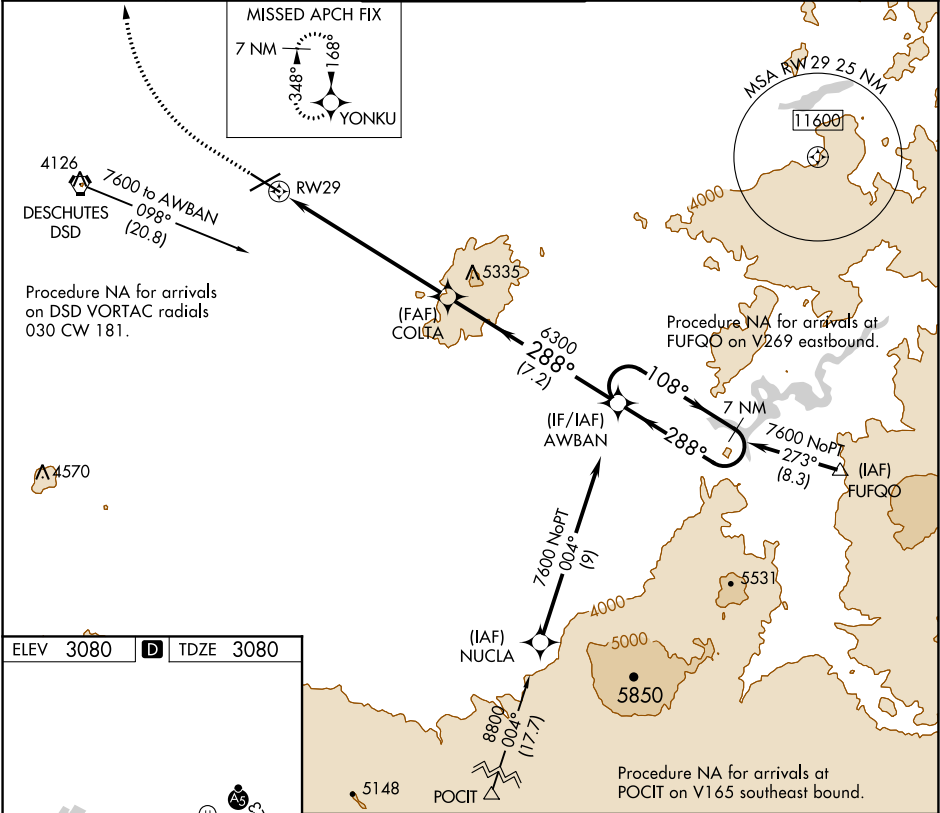
WAAS CH 90214 W29A	APP CRS 288°	Rwy Idg TDZE Apt Elev	7006 3080 3080
--	------------------------	-----------------------------	---

RNAV (GPS) Z RWY 29

ROBERTS FIELD (RDM)

T	For uncompensated Baro-VNAV systems, LNAV/VNAV NA below -20°C (-4°F) or above 43°C (110°F). DME/DME RNP-0.3 NA.	MISSED APPROACH: Climb to 4000 then climbing right turn to 7000 direct YONKU and hold, continue climb-in-hold to 7000.
----------	--	--

ATIS 119.025	SEATTLE CENTER 126.15 269.475	REDMOND TOWER★ 124.5 (CTAF) 0 256.8	GND CON 121.8	UNICOM 122.95
------------------------	---	---	-------------------------	-------------------------



4000	7000	YONKU	VGSi and RNAV glidepath not coincident (VGSi Angle 3.00/TCH 50).		7 NM Holding Pattern
RWY 29			COLTA 6300	288°	108° → ← 288° 7600
				6300	GP 4.20° TCH 43
7.1 NM			7.2 NM		
CATEGORY	A		B	C	D
LPV DA	3366-1		286 (300-1)	NA	
LNAV/ VNAV	DA	3366-1	286 (300-1)	NA	

NW-1, 03 DEC 2020 to 31 DEC 2020

NW-1, 03 DEC 2020 to 31 DEC 2020