

WAAS CH 49216 W27A	APP CRS 270°	Rwy Idg TDZE 6765 Apt Elev 6765
--	------------------------	---

RNAV (GPS) RWY 27

SOUTHWEST WYOMING RGNL (R.KS)

RNP APCH.

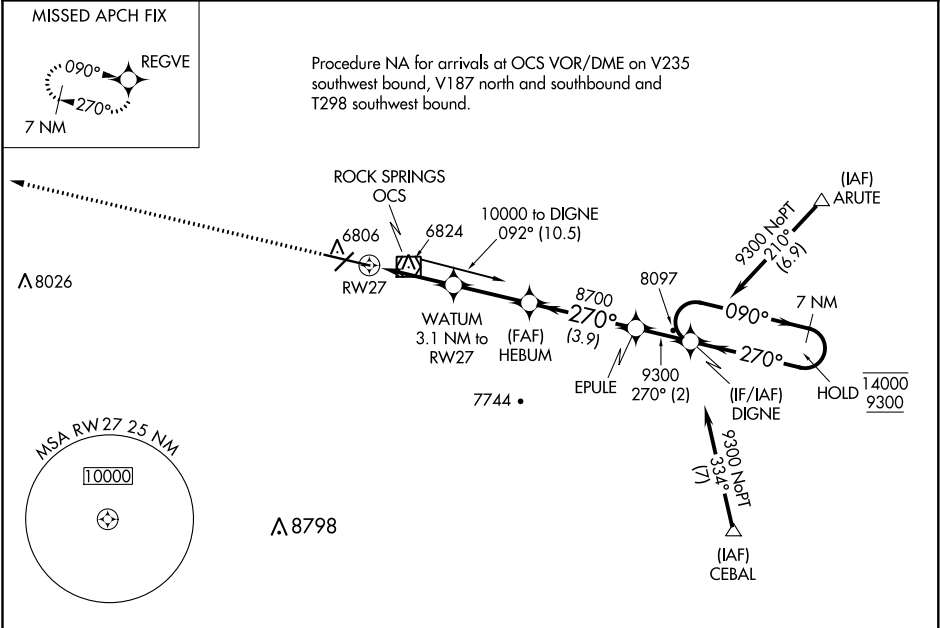
▼

For uncompensated Baro-VNAV systems, LNAV/VNAV NA below -27°C or above 44°C. For inop ALS increase LNAV/VNAV all Cats visibility to ¾ SM.

MALSR

MISSED APPROACH: Climb to 9800
direct REGVE and hold.

ASOS 118.375	SALT LAKE CENTER 124.35 353.5	UNICOM 122.8 (CTAF) 0
------------------------	---	---------------------------------



ELEV 6765	D	TDZE 6765
-----------	----------	-----------

9800 REGVE

*LNAV only.

WATUM 3.1 NM to RW27

HEBUM 8700

EPULE 9300

DIGNE 9300

7 NM Holding Pattern

090° → 14000

← 270° 9300

GP 3.00°

TCH 55

CATEGORY	A	B	C	D
LPV DA		6965-½	200 (200-½)	
LNAV/VNAV DA		7036-½	271 (300-½)	
LNAV MDA		7100-½	335 (400-½)	
CIRCLING	7140-1 375 (400-1)	7220-1 455 (500-1)	7220-1½ 455 (500-1½)	7540-2 ½ 775 (800-2 ½)