

VOR/DME OCS <b>116.0</b> Chan <b>107</b>	APP CRS <b>085°</b>	Rwy Idg <b>10000</b> TDZE <b>6741</b> Apt Elev <b>6765</b>
--	------------------------	--

VOR RWY 9  
SOUTHWEST WYOMING RGNL (RKS)

DME required.

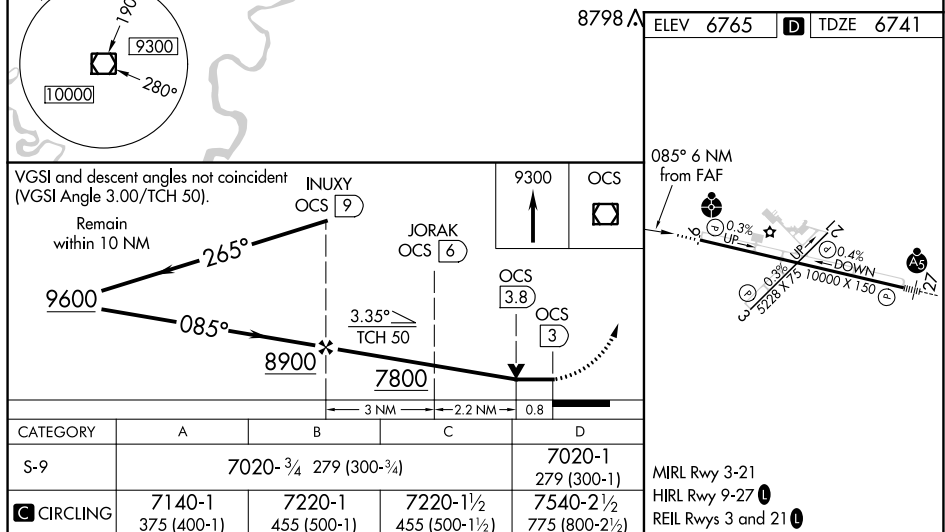
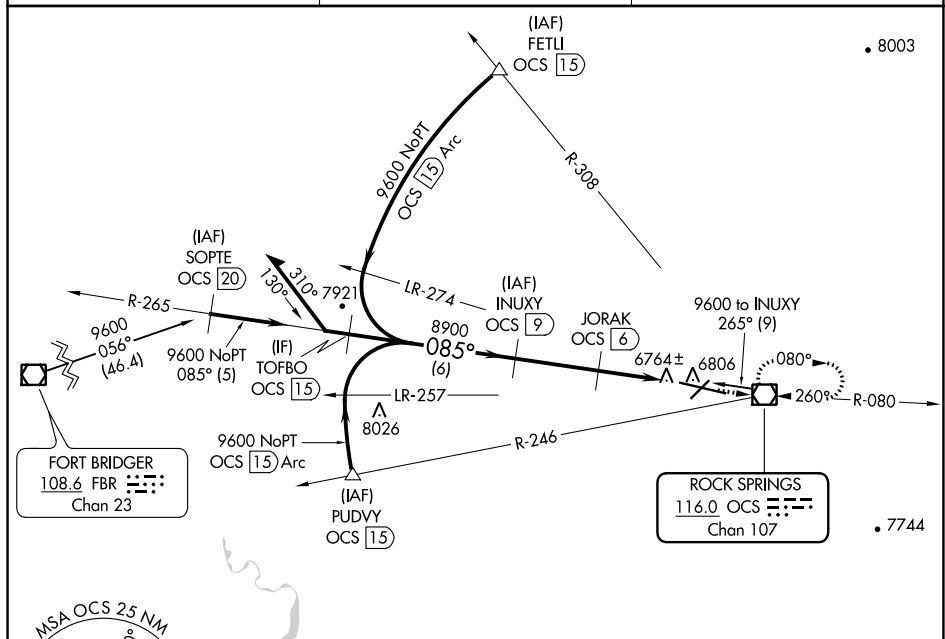


ODALS



**MISSED APPROACH:** Climb to 9300 direct OCS  
VOR/DME and hold, continue climb-in-hold to 9300.

ASOS <b>118.375</b>	SALT LAKE CENTER <b>124.35 353.5</b>	UNICOM <b>122.8 (CTAF) ①</b>
------------------------	---	---------------------------------



ROCK SPRINGS, WYOMING

Amdt 3B 30JAN20

SOUTHWEST WYOMING RGNI (RKS)

VOR RWY 9

41°36'N-109°04'W

NW-1, 03 DEC 2020 to 31 DEC 2020

NW-1, 03 DEC 2020 to 31 DEC 2020