

|  |                        |                             |   |
|--|------------------------|-----------------------------|---|
| WAAS<br>CH <b>97642</b><br><b>W13A</b> | APP CRS<br><b>133°</b> | Rwy Idg<br>TDZE<br>Apt Elev | <b>5811</b><br><b>204</b><br><b>213</b> |
|--|------------------------|-----------------------------|---|

RNAV (GPS) RWY 13

MCNARY FIELD (SLE')

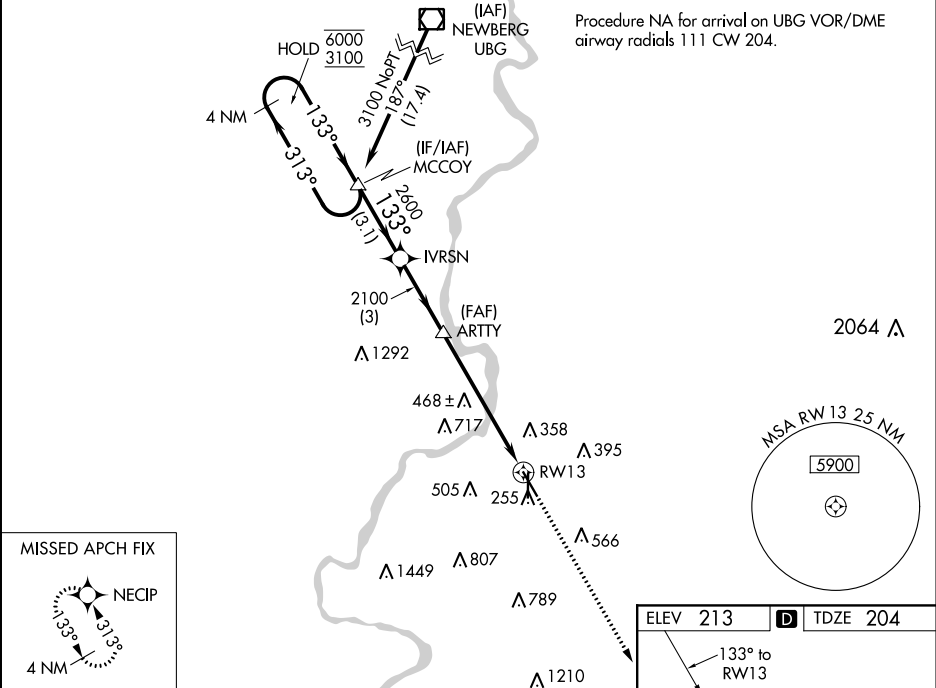
RNP APCH.

Circling Rwy 16, 34 NA at night. Rwy 13 helicopter visibility reduction below ¾ SM NA. Inop table does not apply to LNAV/VNAV all Cats. For uncompensated Baro-VNAV systems, LNAV/VNAV NA below -15°C or above 54°C.

ODALS

MISSED APPROACH: Climb to 3000 direct NECIP and hold.

|                       |                                      |  |                         |                         |
|-----------------------|--------------------------------------|--|-------------------------|-------------------------|
| ATIS<br><b>124.55</b> | SEATTLE CENTER<br><b>125.8 291.7</b> | SALEM TOWER ★<br><b>119.1 (CTAF) 0 257.2</b> | GND CON<br><b>121.9</b> | UNICOM<br><b>122.95</b> |
|-----------------------|--------------------------------------|--|-------------------------|-------------------------|



4 NM

Holding Pattern

MCCOY

IVRSN

ARTTY

3000

NECIP

6000

3100

← 313°

→ 133°

133°

2600

2100

GP 3.04°

TCH 50

\*1.4 NM to RW13

\*LNAV only

3.1 NM

3 NM

4.4 NM

1.4 NM

RW13

CATEGORY

A

B

C

D

LPV DA

454-¾

250 (300-¾)

LNAV/VNAV DA

580-1

376 (400-1)

LNAV MDA

700-¾

496 (500-¾)

700-1¼

496 (500-1¼)

CIRCLING

880-1

960-1

1060-2½

1260-3

667 (700-1)

747 (800-1)

847 (900-2½)

1047 (1100-3)

