

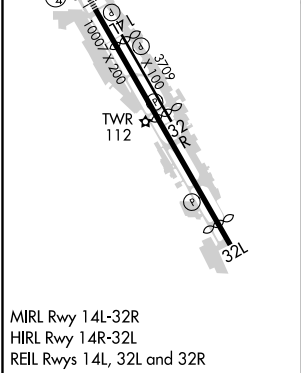
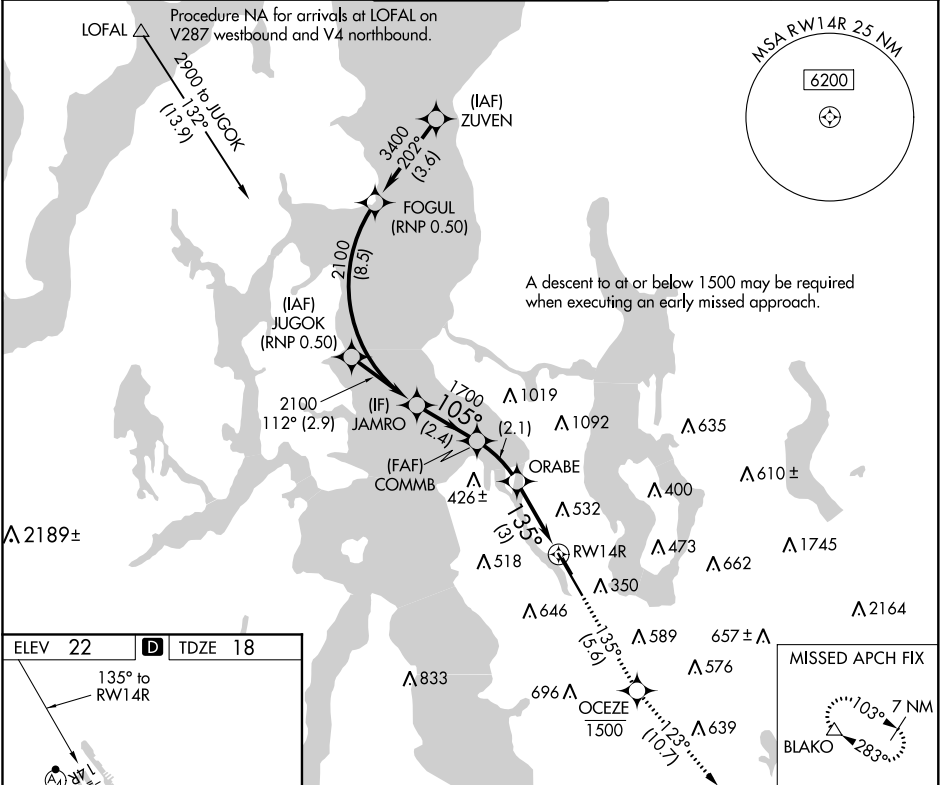
APP CRS	Rwy Idg	9120
135°	TDZE	18
	Apt Elev	22

RNAV (RNP) Z RWY 14R

BOEING FIELD/KING COUNTY INTL (BFI)

<div><div>▼</div><div>GPS and RF required. Inop table does not apply to RNP 0.30 DA.</div></div> <div><div>▲</div><div>For inop MALSF, increase RNP 0.15 DA Cat D visibility to 1¼ mile.</div></div> <div><div></div><div>For uncompensated Baro-VNAV systems, procedure NA below -6°C (22°F) or above 54°C (130°F).</div></div>	<div>MALSF</div> <div><div>Ⓐ</div><div><div></div><div></div><div></div></div></div>	<div>MISSED APPROACH: Climb on track 135° to cross OCEZE at or below 1500 then climb to 6400 on track 123° to BLAKO and hold, continue climb-in-hold to 6400.</div>
--	--	---

ATIS	SEATTLE APP CON	BOEING TOWER	GND CON	CLNC DEL
127.75	119.2 284.7	120.6 257.8	121.9	132.4



JAMRO	COMMB	ORABE	OCEZE	BLAKO
2100	1700	1024	1500	6400
105°		135°		123°
2.4 NM		2.1 NM		3 NM
GP 3.00°	TCH 50			
CATEGORY	A	B	C	D
RNP 0.15 DA	542-1½ 524 (600-1½)			
RNP 0.30 DA	742-2½ 724 (800-2½)			
AUTHORIZATION REQUIRED				

NW-1, 03 DEC 2020 to 31 DEC 2020

NW-1, 03 DEC 2020 to 31 DEC 2020