
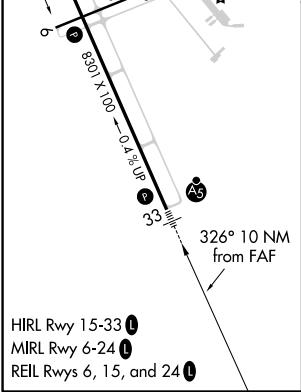
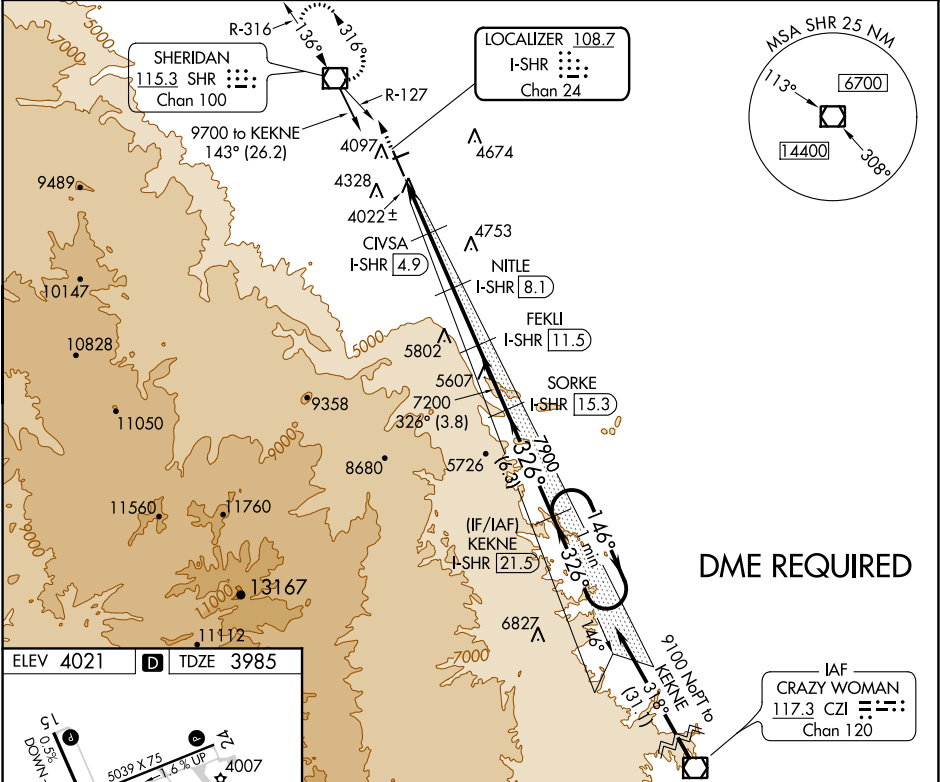


LOC/DME I-SHR <b>108.7</b> Chan 24	APP CRS <b>326°</b>	Rwy Idg TDZE Apt Elev	<b>8301</b> <b>3985</b> <b>4021</b>
--	------------------------	-----------------------------	---

ILS or LOC/DME RWY 33  
SHERIDAN COUNTY (SHR)

<p>When local altimeter setting not received, procedure NA. Night landing: Rwy 24 NA. For inoperative MALSR, increase S-LOC 33 Cats C and D visibility to ¾ mile.</p>	<p>MALSR</p> 	<p>MISSED APPROACH: Climb to 7000 on heading 326° and on SHR VOR/DME R-127 to SHR VOR/DME and hold, continue climb-in-hold to 7000.</p>
---	--	---

ASOS <b>135.175</b>	SALT LAKE CENTER <b>127.75 351.9</b>	UNICOM <b>123.0 (CTAF) 0</b>
------------------------	---	---------------------------------



7000	SHR	Use I-SHR DME when on the localizer course.	FEKLI I-SHR 11.5	SORKE I-SHR 15.3	KEKNE I-SHR 21.5	One Minute Holding Pattern
↑ hdg 326°	R-127					
*LOC only.	CIVSA I-SHR 4.9	NITLE I-SHR 8.1	FEKLI I-SHR 11.5	SORKE I-SHR 15.3	KEKNE I-SHR 21.5	
*I-SHR 1.5	I-SHR 2.3	I-SHR 4.9	I-SHR 8.1	I-SHR 11.5	I-SHR 15.3	I-SHR 21.5
0.8	2.6 NM	3.2 NM	3.4 NM	3.8 NM	6.3 NM	
CATEGORY	A	B	C	D		
S-ILS 33		4185-½	200 (200-½)			
S-LOC 33		4280-½	295 (300-½)			
CIRCLING	4600-1 579 (600-1)	4640-1 619 (700-1)	4860-2½ 839 (900-2½)	5220-3 1199 (1200-3)		

NW-1, 03 DEC 2020 to 31 DEC 2020

NW-1, 03 DEC 2020 to 31 DEC 2020