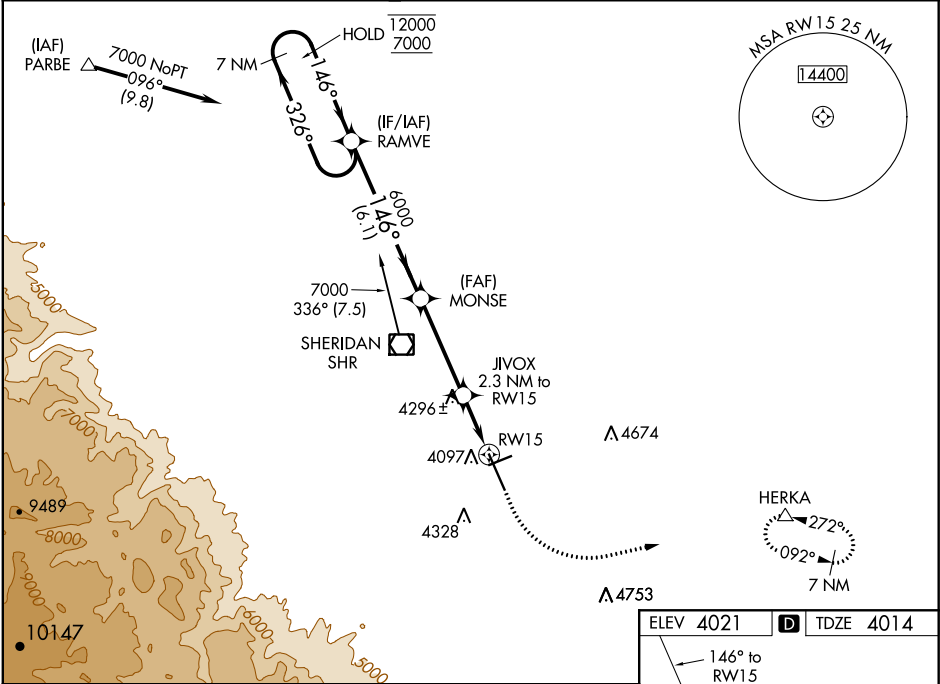


WAAS CH 81899 W15A	APP CRS 146°	Rwy Idg 8301 TDZE 4014 Apt Elev 4021
--	------------------------	---

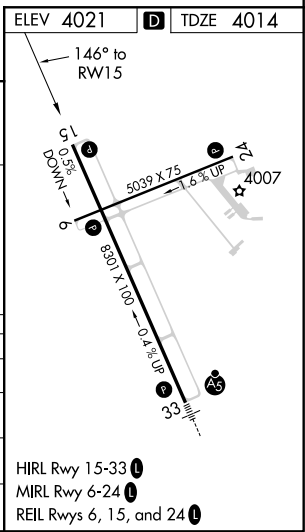
RNAV (GPS) RWY 15
SHERIDAN COUNTY (SHR)

RNP APCH.	MISSED APPROACH: Climb to 4500 then climbing left turn to 7100 direct HERKA and hold, continue climb-in-hold to 7100.
<div><div><div>▼</div><div>▲</div><div>❄</div></div><div>Circling to Rwy 24 NA at night. For uncompensated Baro-VNAV systems, LNAV/VNAV NA below -26°C or above 51°C. When local altimeter setting not received, procedure NA.</div></div>	

ASOS 135.175	SALT LAKE CENTER 127.75 351.9	UNICOM 123.0 (CTAF) 1
------------------------	---	---------------------------------



7 NM Holding Pattern		RAMVE		MONSE		JIVOX 2.3 NM to RW15		HERKA △	
12000 ← 326° 7000 → 146°				6000		*1.6 NM to RW15		*LNAV only	
GP 3.00° TCH 50				6000		*4780		RW15	
		6.1 NM		3.8 NM		0.7 NM		1.6 NM	
CATEGORY	A		B		C		D		
LPV DA			4264-3/4		250 (300-3/4)				
LNAV/VNAV DA			4292-7/8		278 (300-7/8)				
LNAV MDA	4560-1		546 (600-1)		4560-1 5/8		546 (600-1 5/8)		
CIRCLING	4600-1 579 (600-1)		4640-1 619 (700-1)		4860-2 1/2 839 (900-2 1/2)		5220-3 1199 (1200-3)		



NW-1, 03 DEC 2020 to 31 DEC 2020

NW-1, 03 DEC 2020 to 31 DEC 2020