
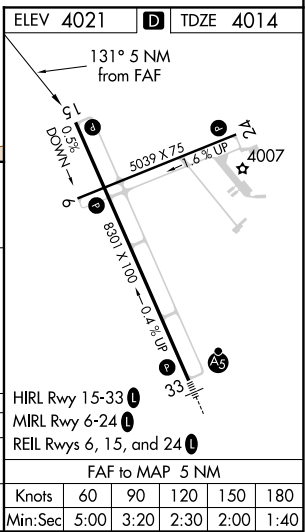
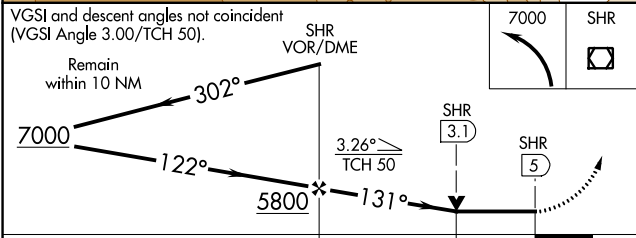
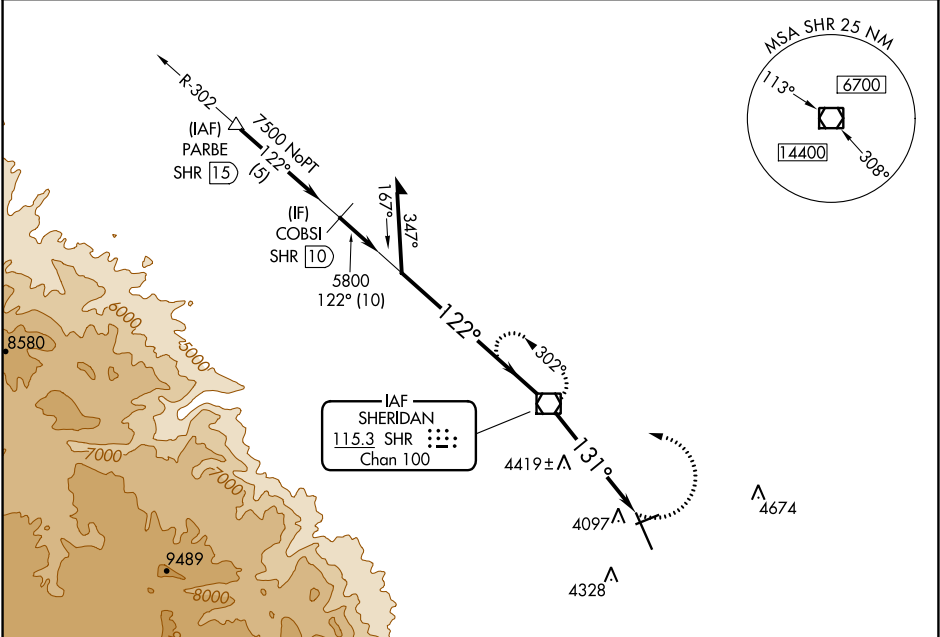



VOR/DME SHR	APP CRS	Rwy Idg	8301
<b>115.3</b>	<b>131°</b>	TDZE	4014
Chan <b>100</b>		Apt Elev	4021

VOR RWY 15  
SHERIDAN COUNTY (SHR)

 -19°C	When local altimeter setting not received, procedure NA. Night landing: Rwy 24 NA.	MISSED APPROACH: Climbing left turn to 7000 direct SHR VOR/DME and hold, continue climb-in-hold to 7000.
---	--	--

ASOS <b>135.175</b>	SALT LAKE CENTER <b>127.75 351.9</b>	UNICOM <b>123.0</b> (CTAF) 
------------------------	---	---



CATEGORY	A	B	C	D
S-15	4680-1 666 (700-1)		4680-1 666 (700-1)	
 CIRCLING	4680-1 659 (700-1)		4860-2 839 (900-2)	5220-3 1199 (1200-3)

NW-1, 03 DEC 2020 to 31 DEC 2020

NW-1, 03 DEC 2020 to 31 DEC 2020