




SPOKANE, WASHINGTON

AL-402 (FAA)

20198

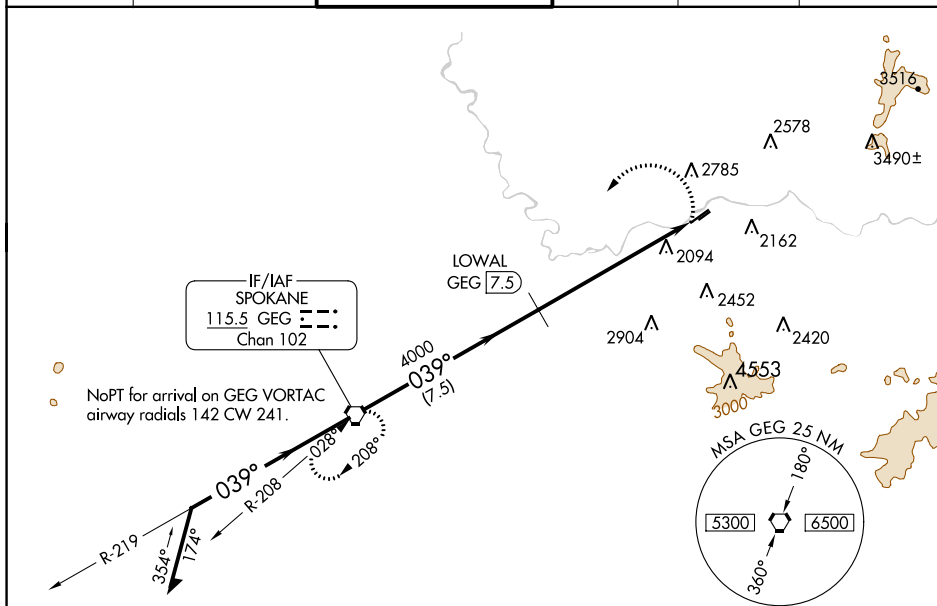
|   |                        |   |
|---|------------------------|---|
| VORTAC GEG<br><b>115.5</b><br>Chan <b>102</b> | APP CRS<br><b>039°</b> | Rwy Idg <b>4499</b><br>TDZE <b>1949</b><br>Apt Elev <b>1957</b> |
|---|------------------------|---|

VOR RWY 4L  
FELTS FIELD (SFF)

 Circling NA northwest of Rwy 4L-22R. VDP NA when using Spokane Intl  
 altimeter setting. Helicopter visibility reduction below  $\frac{3}{4}$  SM NA.  
 -16°C When local altimeter setting not received, use Spokane Intl altimeter  
 setting and increase all MDA 100 feet. DME required.

**MISSED APPROACH:** Climbing left turn to 4500 direct GEG VORTAC and hold.

|                       |  |  |                         |                          |                         |
|-----------------------|--|--|-------------------------|--------------------------|-------------------------|
| ATIS<br><b>120.55</b> | SPOKANE APP CON<br><b>133.35 263.0</b> | FELTS TOWER ★<br><b>132.5 (CTAF) 0 239.025</b> | GND CON<br><b>121.7</b> | CLNC DEL<br><b>121.7</b> | UNICOM<br><b>122.95</b> |
|-----------------------|--|--|-------------------------|--------------------------|-------------------------|



NW-1, 03 DEC 2020 to 31 DEC 2020

ELEV 1957

TDZE 1949

4699 X 140

2650 X 75

039° 6.3 NM from FAF


TWR 2037

WATER RWYS. 03W-21W 6000 X 100

REIL Rwy 4L

MRL Rwy 4L-22R

| Altitude (ft) | Distance (NM) | Gradient (°) |
|---------------|---------------|--------------|
| 4500          | 0             | 21°          |
| 4500          | 0.39          | 039°         |
| 4000          | 0.39          | 039°         |
| 3000          | 1.38          | 3.00°        |

|  |                           | 7.5 NM                    |                         | 3.3 NM                  | 3 NM |
|--|---------------------------|---------------------------|-------------------------|-------------------------|------|
| CATEGORY   | A                         |                           | C                       | D                       |      |
| S-4L   | 2960-1¼<br>1011 (1100-1¼) | 2960-1½<br>1011 (1100-1½) | 2960-3                  | 1011 (1100-3)           |      |
|  CIRCLING | 2960-1¼<br>1003 (1100-1¼) | 2960-1½<br>1003 (1100-1½) | 3020-3<br>1063 (1100-3) | 3360-3<br>1403 (1500-3) |      |

SPOKANE, WASHINGTON

Amdt 6 21JUL16

47°41'N-117°19'W

FELTS FIELD (SFF)  
VOR RWY 4L