

LOC/DME I-OLJ 111.1 Chan 48	APP CRS 031°	Rwy Idg TDZE 2385 Apt Elev 2385
---	------------------------	---

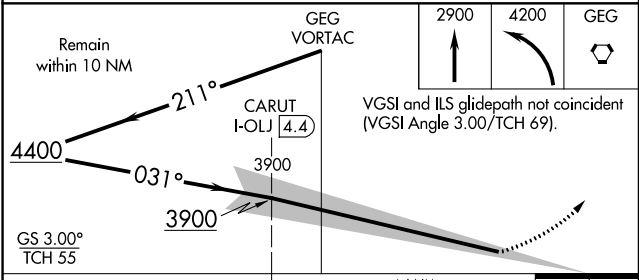
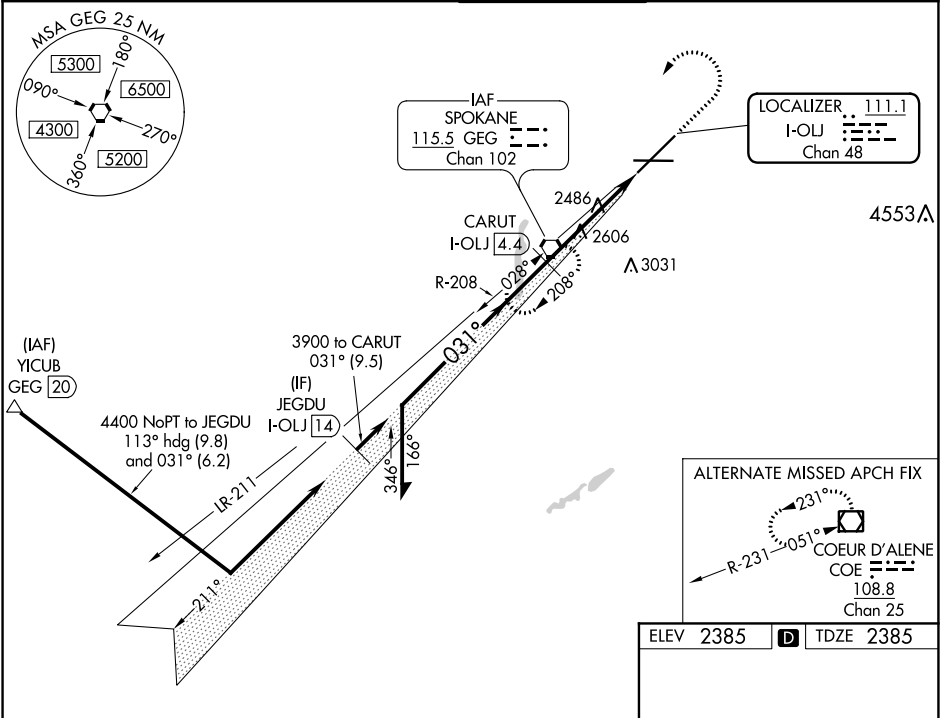
ILS RWY 3 (SA CAT I)
SPOKANE INTL (GEG)

Requires specific OPSPEC, MSPEC, or LOA approval and use of HUD to DH.

ALSF-2

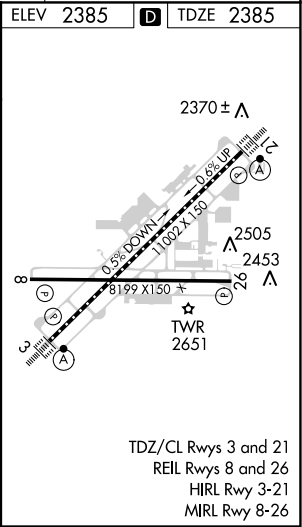
MISSED APPROACH: Climb to 2900 then climbing left turn to 4200 direct GEG VORTAC and hold.

ATIS 124.325 254.375	SPOKANE APP CON 123.75 282.25 (205°-025°) 133.35 263.0 (026°-204°)	SPOKANE TOWER 118.3 278.3	GND CON 121.9 348.6	CLNC DEL 127.55
--------------------------------	--	-------------------------------------	-------------------------------	---------------------------



CATEGORY	A	B	C	D
S-ILS 3	RA 154/14 150 DA 2535			

SA CATEGORY I ILS - SPECIAL AIRCREW & AIRCRAFT CERTIFICATION REQUIRED



NW-1, 03 DEC 2020 to 31 DEC 2020

NW-1, 03 DEC 2020 to 31 DEC 2020