

APP CRS	Rwy Idg	11002
212°	TDZE	2346
	Apt Elev	2385

RNAV (RNP) Z RWY 21

SPOKANE INTL (GEG)

RNP AR APCH.

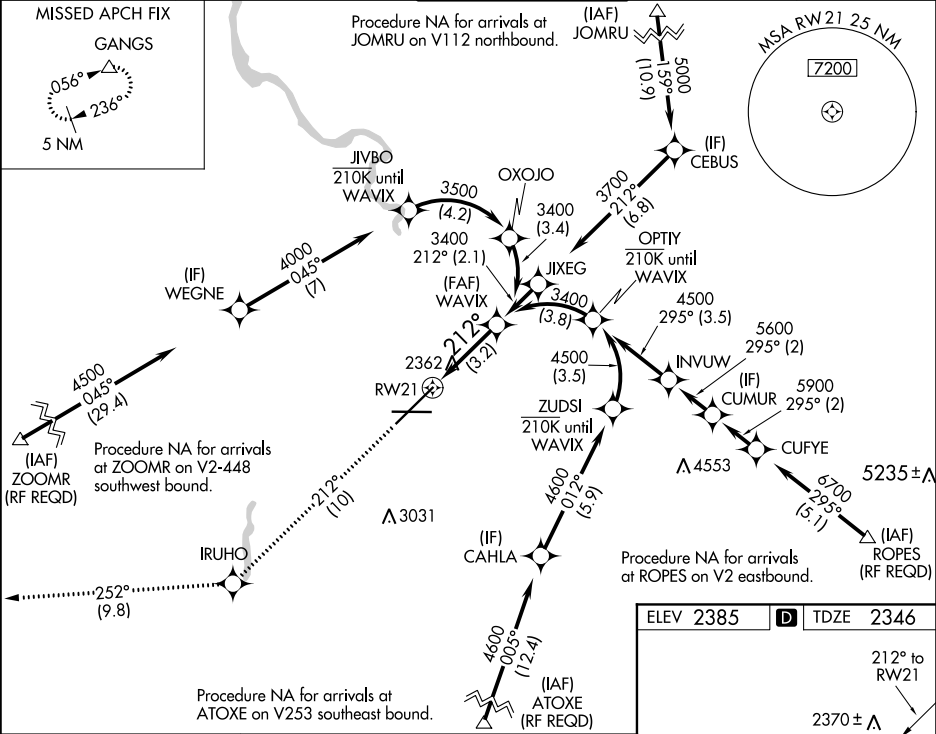
▼ For uncompensated Baro-VNAV systems, procedure NA below -19°C or above 43°C. For inop ALS increase RNP 0.11 visibility all Cats to ¾, RNP 0.15 visibility all Cats to 1½ and RNP 0.30 visibility all Cats to 1¾.

ALSF-2

MISSED APPROACH: Climb to 5000 on track 212° to IRUHO and on track 252° to GANGS and hold.

\*Missed approach requires minimum climb of 310 feet per NM to 3000.

ATIS	SPOKANE APP CON	SPOKANE TOWER	GND CON	CLNC DEL
124.325 254.375	123.75 282.25 (205°-025°) 133.35 263.0 (026°-204°)	118.3 278.3	121.9 348.6	127.55



5000 IRUHO

↑ tr 212°

tr 252°

△

VGSI and RNAV glidepath not coincident (VGSI Angle 3.00/TCH 73).

WAVIX

3400

3400

GP 3.00° TCH 55

3.2 NM

See planview for multiple IF locations.

RW21

212°

ELEV 2385 TDZE 2346

212° to RW21

2370 ±

2505

2453

8199 X150

TWR 2651

TDZ/CL Rwy 3 and 21

REIL Rwy 8 and 26

HIRL Rwy 3-21

MIRL Rwy 8-26