

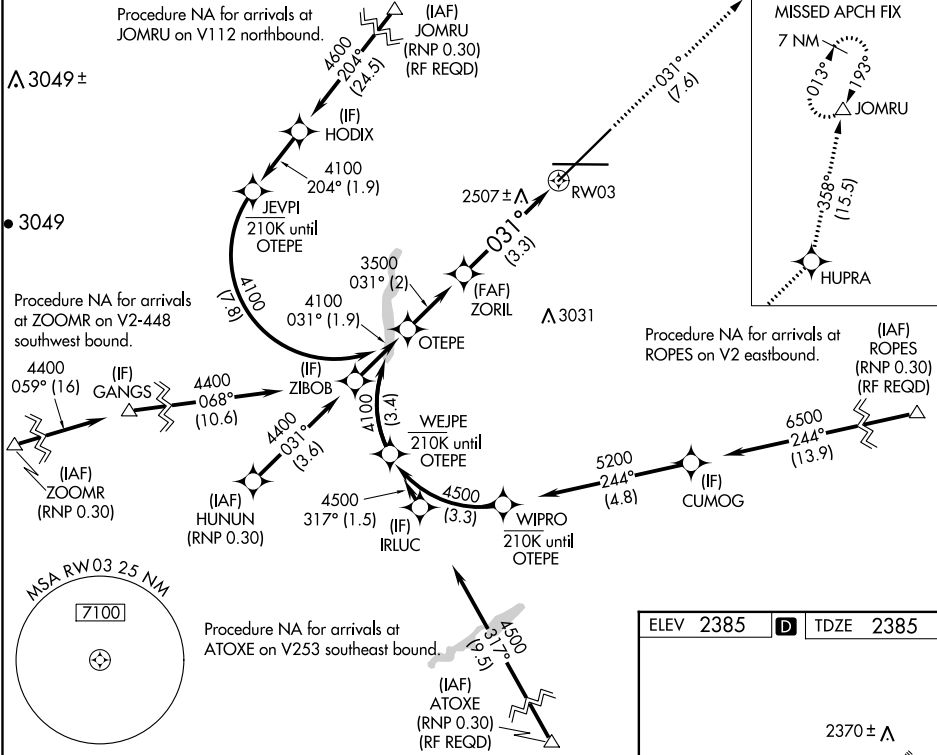
APP CRS	Rwy Idg	11002
031°	TDZE	2385
	Apt Elev	2385

RNAV (RNP) Z RWY 3

SPOKANE INTL (GEG)

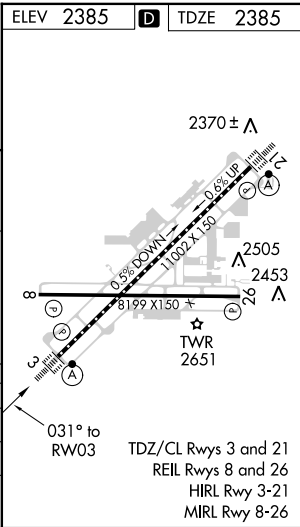
RNP AR APCH.	ALSF-2	MISSED APPROACH: Climb to 7000 on track 031° to HUPRA and on track 358° to JOMRU and hold.
▼ For uncompensated Baro-VNAV systems, procedure NA below -18°C or above 53°C.		

ATIS	SPOKANE APP CON	SPOKANE TOWER	GND CON	CLNC DEL
124.325 254.375	123.75 282.25 (205°-025°) 133.35 263.0 (026°-204°)	118.3 278.3	121.9 348.6	127.55



CATEGORY	A	B	C	D
RNP 0.11 DA	2716/26	331 (400-½)		
RNP 0.30 DA	2842/45	457 (500-¾)		

AUTHORIZATION REQUIRED



NW-1, 03 DEC 2020 to 31 DEC 2020

NW-1, 03 DEC 2020 to 31 DEC 2020