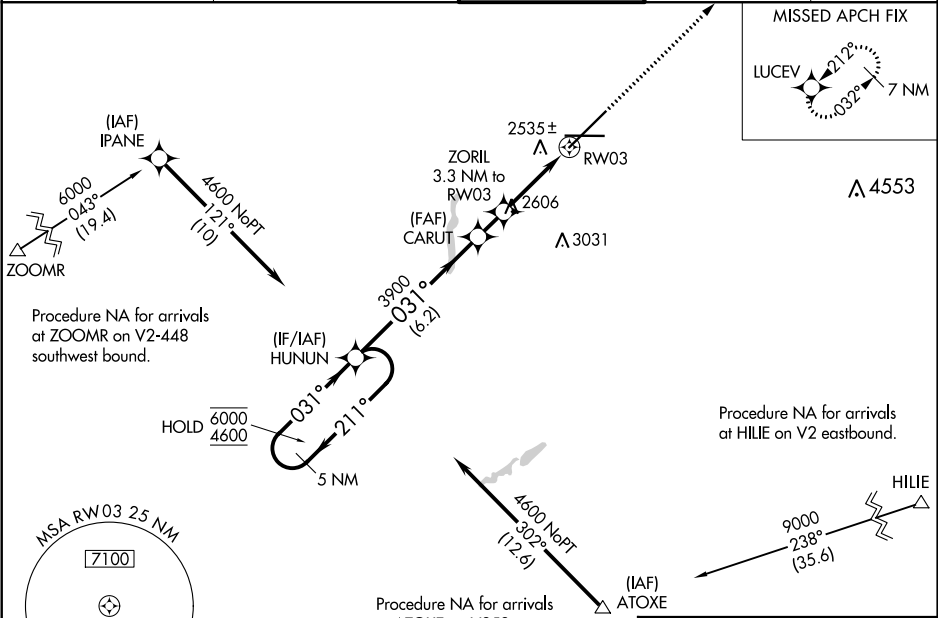


WAAS CH 81920 W03A	APP CRS 031°	Rwy Idg TDZE 2385 Apt Elev 2385	11002 2385 2385
--	------------------------	---	--

RNAV (GPS) Y RWY 3

SPOKANE INTL (GEG)

RNP APCH. ▼ For uncompensated Baro-VNAV systems, LNAV/VNAV NA below -18°C or above 53°C. For inop ALS increase LNAV/VNAV all Cats visibility to 1½ SM and increase LNAV Cats C and D visibility to 1¾ SM.		ALSf-2 	MISSED APPROACH: Climb to 8200 direct LUCEV and hold, continue climb-in-hold to 8200.	
ATIS 124.325 254.375	SPOKANE APP CON 123.75 282.25 (205°-025°) 133.35 263.0 (026°-204°)	SPOKANE TOWER 118.3 278.3	GND CON 121.9 348.6	CLNC DEL 127.55



		ELEV 2385		D		TDZE 2385	
		5 NM Holding Pattern HUNUN		VGSi and RNAV glidepath not coincident (VGSi Angle 3.00/TCH 69).		8200 LUCEV	
6000 4600		← 211° 031° →		CARUT 3900		*LNAV only.	
GP 3.00° TCH 55		031° 3900		ZORIL 3.3 NM to RW03		*1.8 NM to RW03	
		6.2 NM		1.3 NM		1.5 NM	
		1.8 NM		RW03		RW03	
CATEGORY		A		B		C	
D							
LPV	DA	2585/18		200 (200-½)			
LNAV/VNAV	DA	2962-1½		577 (600-1½)			
LNAV	MDA	3020/24 635 (700-½)		3020/60 635 (700-1¼)		3020-1½ 635 (700-1½)	

2370 ± Δ

0.8% DOWN

0.8% UP

1002 X 150

8199 X 150

2505

2453

TWR 2651

031° to RW03

TDZ/CL Rws 3 and 21

REIL Rws 8 and 26

HIRL Rwy 3-21

MIRL Rwy 8-26

NW-1, 03 DEC 2020 to 31 DEC 2020

NW-1, 03 DEC 2020 to 31 DEC 2020