

JOINT BASE LEWIS MCCORD, WASHINGTON

ILS or LOC RWY 15

| | | |
|---|-------------------------|---|
| LOC I-GRF 108.3 Chan 20 | APCH CRS 151° | Rwy Idg TDZE Arpt Elev 6124 300 301 |
|---|-------------------------|---|

AL-413 [USA]

GRAY AAF (KGRF)

RNAV1 - GPS from SEA VORTAC.

DME required for civil use. For non-RNAV aircraft, RADAR required from SEA VORTAC.

⚠ * When ALS inop when using McChord AFB altimeter setting, increase LOC CAT C/D vis to RVR 55.



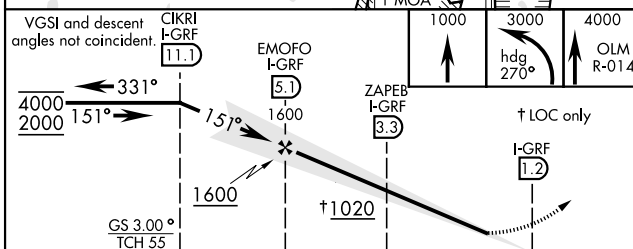
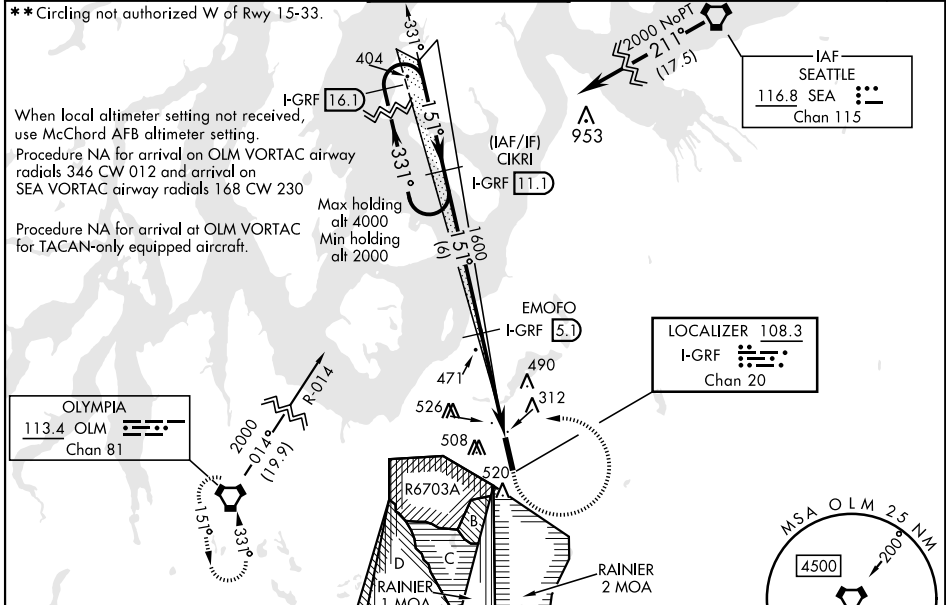
MISSED APPROACH: Climb to 1000, then climbing left turn to 3000 on hdg 270° and OLM VORTAC R-014, then continue climb to 4000 on OLM R-014 to OLM and hold.

| | | | | | |
|-----------------------------|---------------------------------------|---|-------------------------------|--------------------------------|-----|
| ATIS 124.65 306.2 | SEATTLE APP CON 120.1 290.9 | GRAY TOWER ★ 119.325 (CTAF) 256.8 | GND CON 121.9 290.2 | CLNC DEL 121.9 290.2 | PAR |
|-----------------------------|---------------------------------------|---|-------------------------------|--------------------------------|-----|

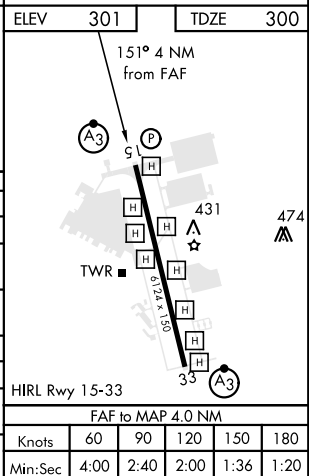
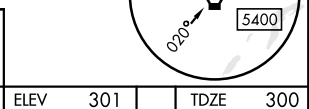
**Circling not authorized W of Rwy 15-33.

When local altimeter setting not received, use McChord AFB altimeter setting.
Procedure NA for arrival on OLM VORTAC airway radials 346 CW 012 and arrival on SEA VORTAC airway radials 168 CW 230

Procedure NA for arrival at OLM VORTAC for TACAN-only equipped aircraft.



| CATEGORY | A | B | C | D |
|--|--------|---------------|------------------------------|----------------------|
| S-ILS 15 | 500/24 | | 200 | (200-1/2) |
| S-LOC 15 | 640/24 | 340 (400-1/2) | 640/26 | 340 (400-1/2) |
| CIRCLING ** | 840-1 | 539 (600-1) | 840-1 1/2 539 (600-1 1/2) | 920-2 619 (700-2) |
| McCHORD FLD ALTIMETER SETTING MINIMUMS | | | | |
| S-ILS 15 | 516/24 | | 216 | (300-1/2) |
| S-LOC 15* | 660/24 | 360 (400-1/2) | 660/35 | 360 (400-3/4) |
| CIRCLING ** | 860-1 | 559 (600-1) | 860-1 1/2 559 (600-1 1/2) | 940-2 639 (700-2) |



JOINT BASE LEWIS MCCORD, WASHINGTON

47°05'N-122°35'W

GRAY AAF (KGRF)

Amdt 8A 05DEC19

ILS or LOC RWY 15