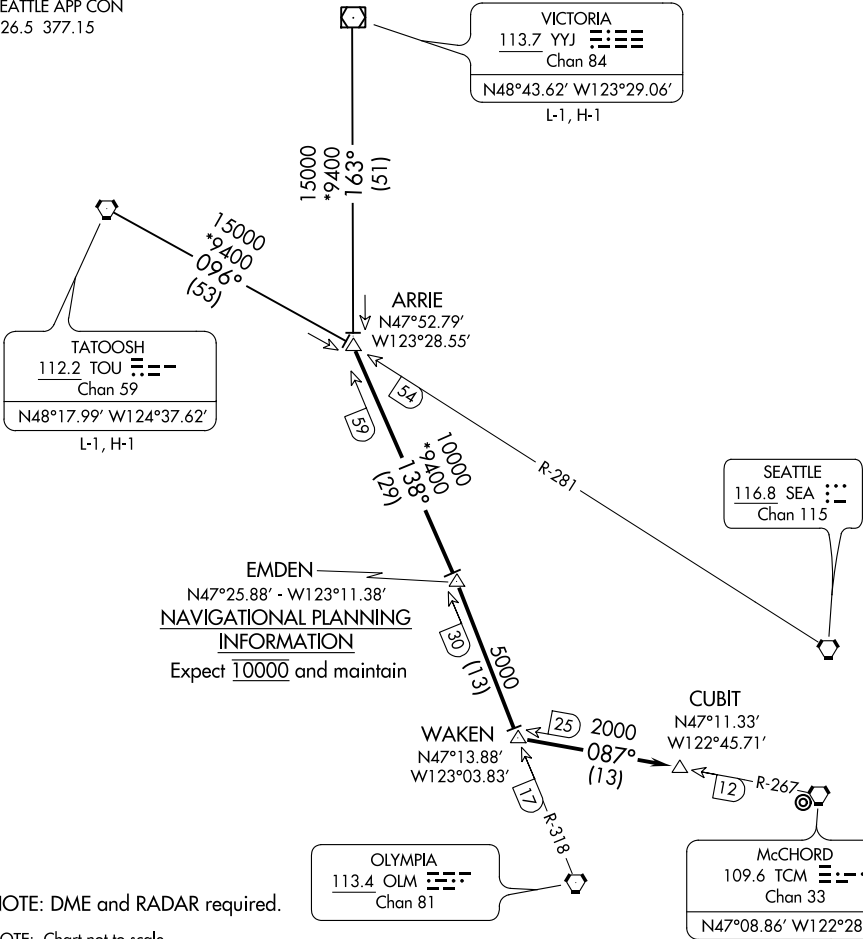


(ARRIE.ARRIE7) 19227

ARRIE SEVEN ARRIVAL

MCCHORD FIELD (JOINT BASE LEWIS-MCCHORD) (KTCM)
AL-414 (FAA) TACOMA, WASHINGTON

D-ATIS 270.1
SEATTLE APP CON
126.5 377.15



NOTE: DME and RADAR required.

NOTE: Chart not to scale.

ARRIVAL ROUTE DESCRIPTION

TATOOSH TRANSITION (TOU.ARRIE7): From over TOU VORTAC on TOU R-096 to ARRIE. Thence. . .
VICTORIA TRANSITION (YYJ.ARRIE7): From over YYJ VOR/DME on YYJ R-163 to ARRIE. Thence. . .
. . . From over ARRIE on OLM R-318 and TCM R-267 to CUBIT, expect RADAR vectors to final approach course.
LOST COMMUNICATIONS: Proceed direct to TCM VORTAC.

ARRIE SEVEN ARRIVAL

(ARRIE.ARRIE7) 15OCT15

TACOMA, WASHINGTON
MCCHORD FIELD (JOINT BASE LEWIS-MCCHORD) (KTCM)

NW-1, 03 DEC 2020 to 31 DEC 2020

NW-1, 03 DEC 2020 to 31 DEC 2020