




TACOMA, WASHINGTON

ILS RWY 34 (CAT II)

LOC I-TCM <u>108.5</u>	APCH CRS 345°	Rwy Idg 10,108 TDZE 322 Arpt Elev 322
----------------------------------	-------------------------	--

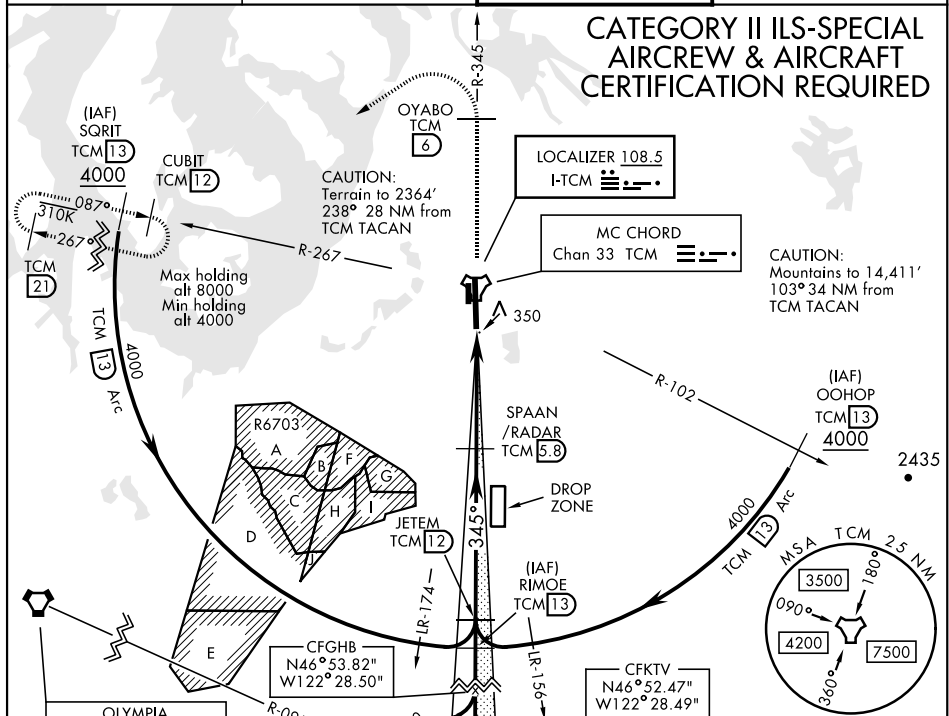
AL-414 [USAF]


MC CHORD FIELD (KTCM)

	ALSF-2  	MISSED APPROACH: Climb to 4000 on TCM TACAN R-345 to OYABO, then turn left via 215° course to intercept TCM R-267 to CUBIT and hold, continue climb in hold to 4000. Cross OYABO at or above 3000.
---	---	--

ATIS 135.825 270.1	SEATTLE APP CON 126.5 377.15	MCCHORD TOWER 124.8 259.3	GND CON 118.175 279.65
-----------------------	---------------------------------	------------------------------	---------------------------

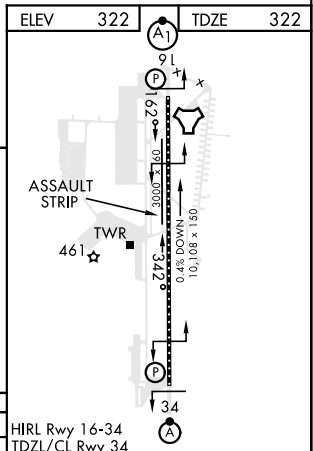
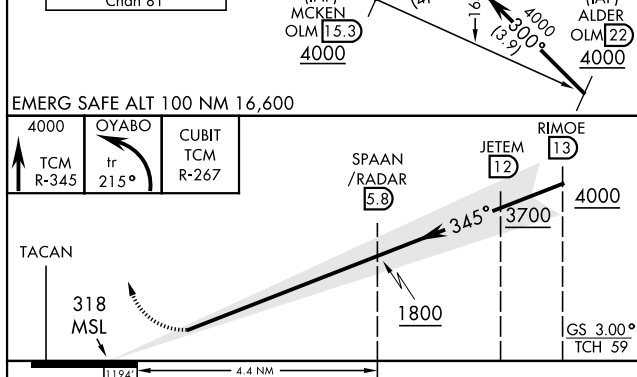
CATEGORY II ILS-SPECIAL
AIRCREW & AIRCRAFT
CERTIFICATION REQUIRED



113.4 OLM 
Chan 81

113.4 OLM  (IAF)  (IAF)  (IAF)

ELEV	322		TDZE	322
------	-----	---	------	-----



CATEGORY	A	B	C	D	E
S-ILS 34	RA 139/12		100	DA 422	

TACOMA, WASHINGTON

47°08'N-122°29'W

MC CHORD FIELD (KTCM)

Amdt 4 10SEP20

ILS RWY 34 (CAT II)

NW-1, 03 DEC 2020 to 31 DEC 2020

NW-1, 03 DEC 2020 to 31 DEC 2020