

APCH CRS 165°	Rwy Idg 10,108 TDZE 286 Arpt Elev 322
-------------------------	--

AL-414 [USAF]

MC CHORD FIELD (KTCM)

T * When ALS inop, increase CAT AB vis to 1 mile,
CAT CDE vis to 1 3/8 miles.
** Circling not authorized E of rwy 16-34.

ALSF-1

MISSED APPROACH: Climb to 4000 direct JODOR and hold. Continue climb in hold to 4000.

ATIS
135.825 270.1

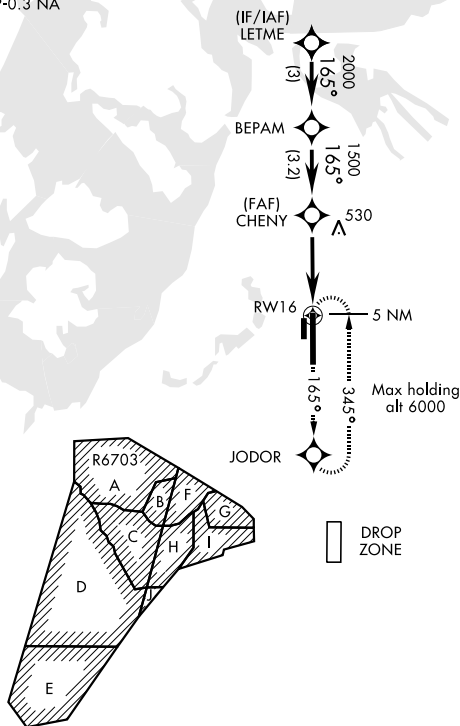
SEATTLE APP CON
126.5 377.15

MCCHORD TOWER
124.8 259.3

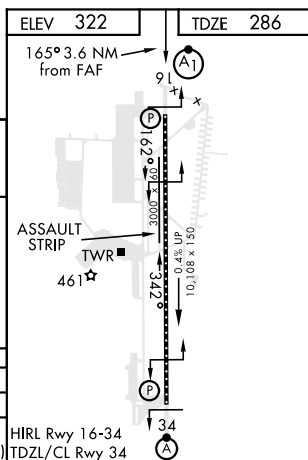
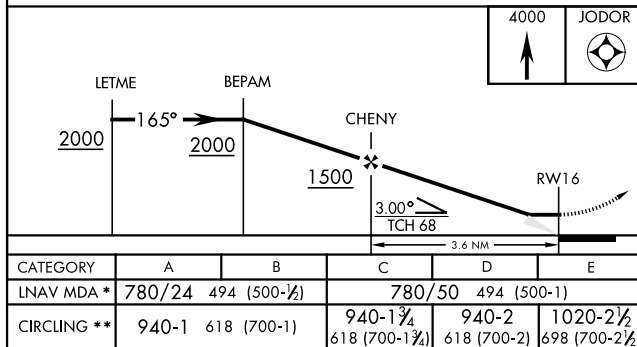
GND CON
118.175 279.65

RADAR REQUIRED

DME/DME RNP-0.3 NA



EMERG SAFE ALT 100 NM 16,600



TACOMA, WASHINGTON

47°08'N-122°29'W

MC CHORD FIELD (KTCM)

Amdt 3 10SEP20

RNAV (GPS) RWY 16

NW-1, 03 DEC 2020 to 31 DEC 2020

NW-1, 03 DEC 2020 to 31 DEC 2020