

RNAV (GPS) RWY 34

APCH CRS	Rwy Idg
345°	10,108
TDZE	322
Arpt Elev	322

AL-414 [USAF]

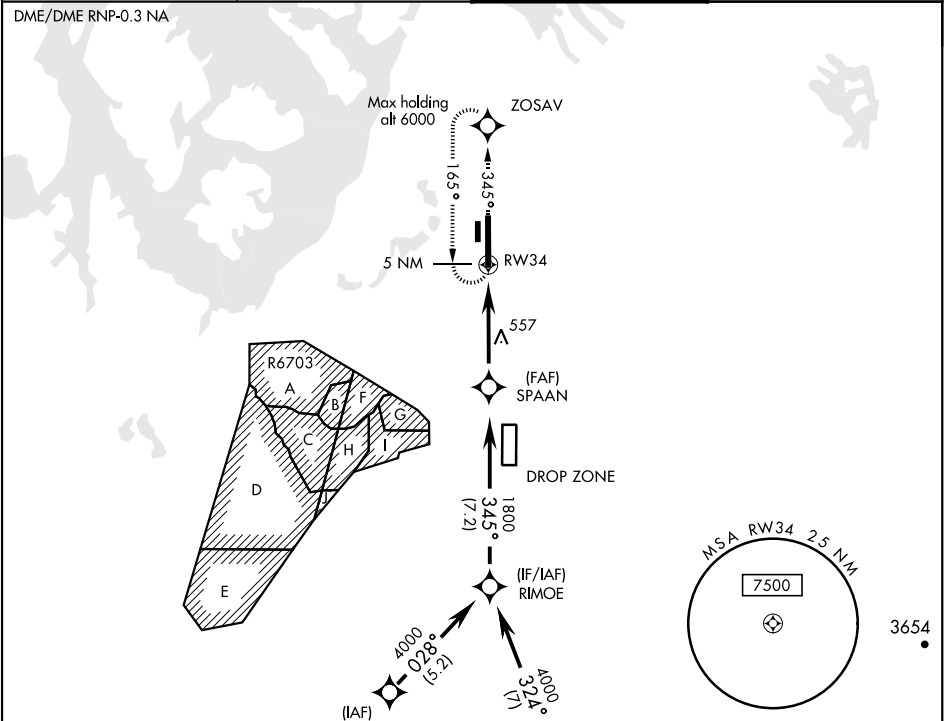
MC CHORD FIELD (KTCM)

**⚠** \* When ALS inop, increase CAT AB RVR to 55, vis to 1 mile; CAT CDE vis to 1 3/4 miles.  
\*\* Circling not authorized E of rwy 16-34.

ALSF-2

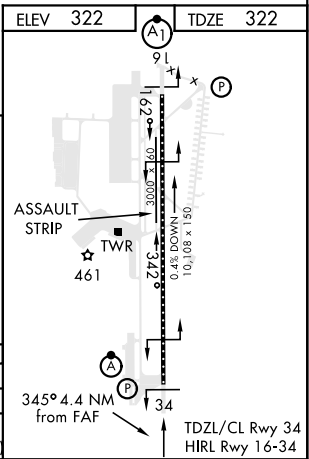
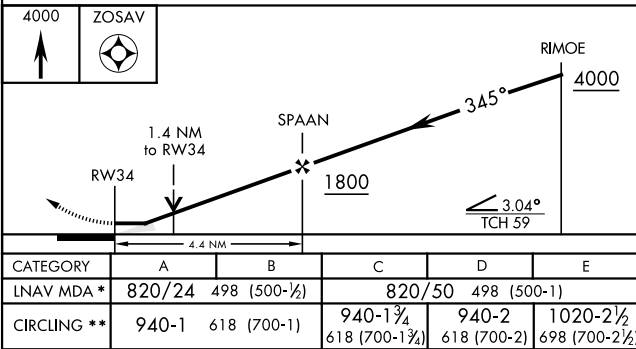
MISSED APPROACH: Climb to 4000 direct ZOSAV and hold, continue climb in hold to 4000.

ATIS 135.825 270.1	SEATTLE APP CON 126.5 377.15	MCCHORD TOWER 124.8 259.3	GND CON 118.175 279.65
-----------------------	---------------------------------	------------------------------	---------------------------



RADAR REQUIRED

EMERG SAFE ALT 100 NM 16,600



RNAV (GPS) RWY 34

NW-1, 03 DEC 2020 to 31 DEC 2020

NW-1, 03 DEC 2020 to 31 DEC 2020