

TACOMA, WASHINGTON

TACAN RWY 16

TACAN TCM Chan 33	APCH CRS 160°	Rwy Idg 10,108 TDZE 286 Arpt Elev 322
-----------------------------	-------------------------	--

AL-414 [USAF]

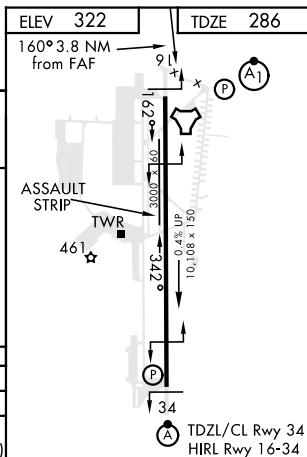
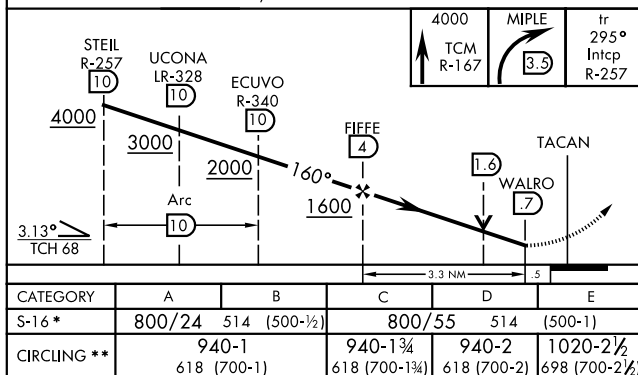
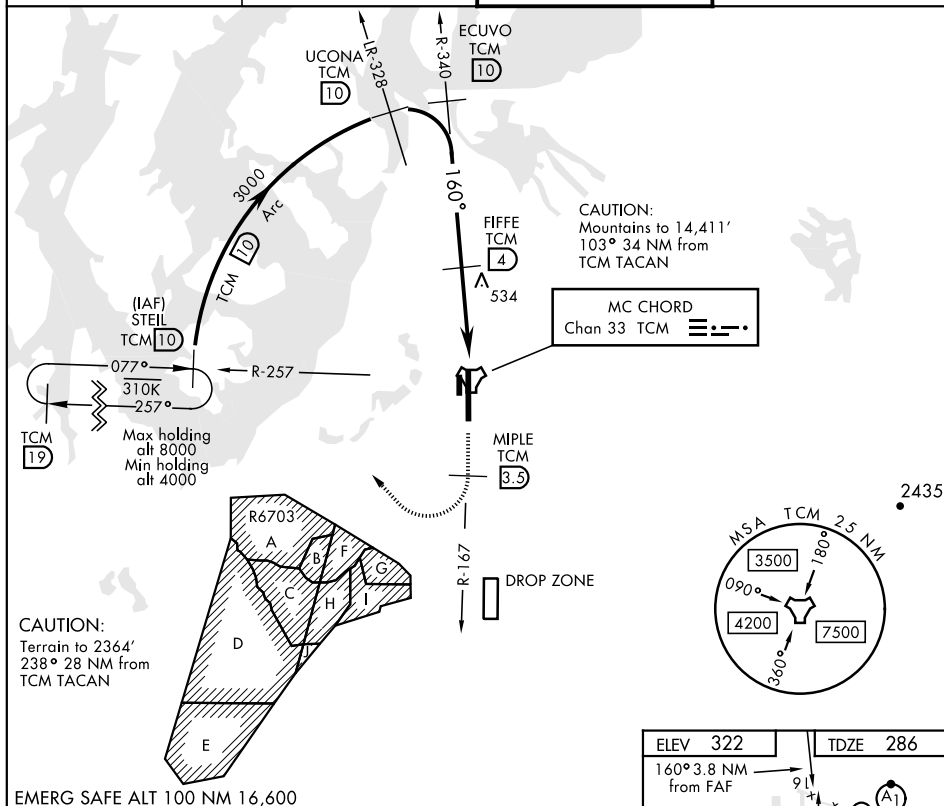
MC CHORD FIELD (KTCM)

T * When ALS inop, increase CAT AB RVR to 55, vis to 1 mile, CAT CDE vis to 1 3/8 miles.
** Circling not authorized E of Rwy 16-34.

ALSF-1

MISSED APPROACH: Climb to 4000 on TCM TACAN R-167. At TCM 3.5 DME turn right via 295° course to intercept TCM R-257 to STEIL and hold, continue climb in hold to 4000.

ATIS 135.825 270.1	SEATTLE APP CON 126.5 377.15	MCCHORD TOWER 124.8 259.3	GND CON 118.175 279.65
-----------------------	---------------------------------	------------------------------	---------------------------



TACOMA, WASHINGTON

47°08'N-122°29'W

MC CHORD FIELD (KTCM)

Amdt 3 10SEP20

TACAN RWY 16

NW-1, 03 DEC 2020 to 31 DEC 2020

NW-1, 03 DEC 2020 to 31 DEC 2020