

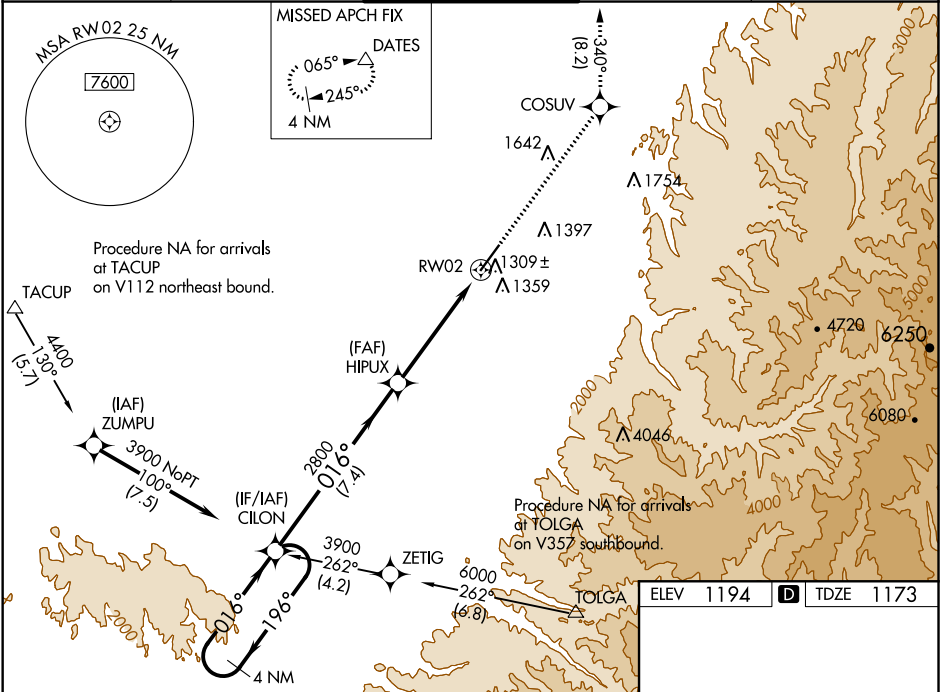
WAAS CH 72805 W02A	APP CRS 016°	Rwy Idg TDZE 1173 Apt Elev 1194
--	------------------------	---

RNAV (GPS) RWY 2
WALLA WALLA RGNL (ALW)

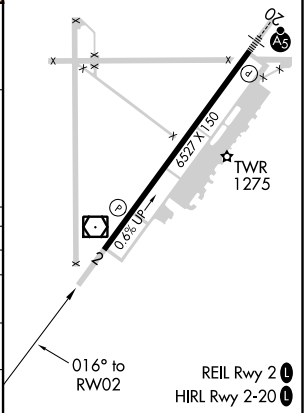
⚠ For uncompensated Baro-VNAV systems, LNAV/VNAV NA below -11°C (13°F) or above 54°C (130°F). DME/DME RNP-0.3 NA. When local altimeter setting not received, use Pendleton altimeter setting and increase all DA/MDA 120 feet and LPV all visibilities ¼ mile, LNAV/VNAV all visibilities ⅓ mile, LNAV Cats C/D visibility ⅓ mile, and Circling Cat C visibility ¼ mile. VDP and Baro-VNAV NA when using Pendleton altimeter setting.

MISSED APPROACH: Climb to 4000 direct COSUV and on track 340° to DATES and hold.

ASOS 135.875	CHINOOK APP CON ★ 133.15 379.15	WALLA WALLA TOWER ★ 118.5(CTAF) 289.4	GND CON 121.6 289.4	UNICOM 122.95
------------------------	---	---	-------------------------------	-------------------------



4 NM Holding Pattern		CILON	HIPIUX	4000	COSUV	tr 340°	DATES
3900		196°	016°	2800			
GP 3.00° TCH 45			2800				
		7.4 NM	3.9 NM	1.1 NM			
CATEGORY	A	B	C	D	*LNAV only.		
LPV DA		1373-3/4	200 (200-3/4)				
LNAV/VNAV DA		1509-1 1/8	336 (400-1 1/8)				
LNAV MDA	1560-1	387 (400-1)	1560-1 1/8	387 (400-1 1/8)			
CIRCLING	1760-1 566 (600-1)	1820-1 626 (700-1)	2120-2 3/4 926 (1000-2 3/4)	2300-3 1106 (1200-3)			



NW-1, 03 DEC 2020 to 31 DEC 2020

NW-1, 03 DEC 2020 to 31 DEC 2020