

VOR/DME ALW  
**116.4**  
Chan **111**

APP CRS  
**197°**

Rwy Idg **6527**  
TDZE **1194**  
Apt Elev **1194**

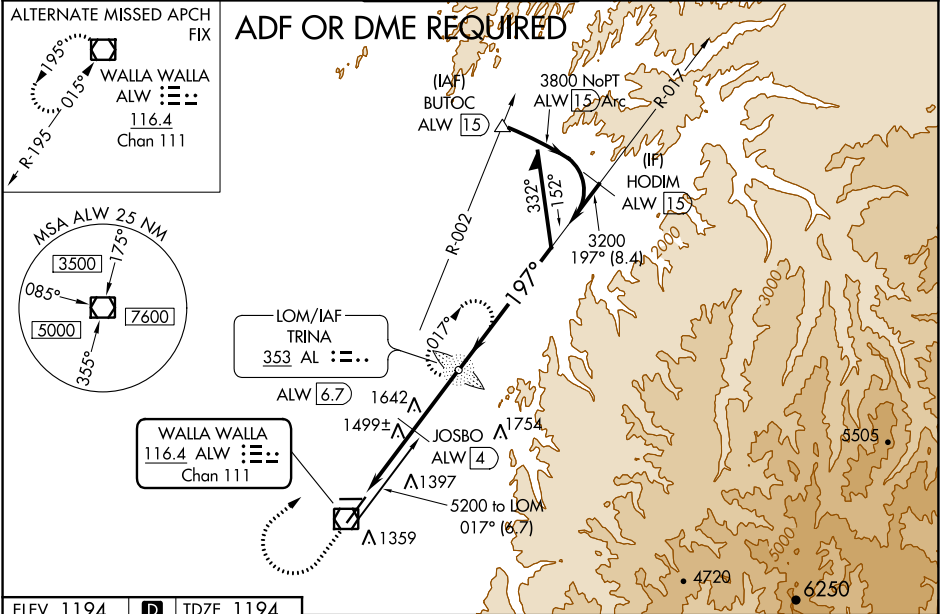
VOR RWY 20  
WALLA WALLA RGNL (ALW)

ADF required. VDP NA with Pendleton altimeter setting. When local altimeter setting not received, use Pendleton altimeter setting and increase all MDA 120 feet. Increase S-20 visibility Cat B ¼ mile, Cat C and D ½ mile. Increase JOSBO fix minimums S-20 visibility Cat C and D ¼ mile, Circling visibility Cat A and C ¼ mile, and Cat B ½ mile.

MALSR

MISSED APPROACH: Climb to 2300 then climbing right turn to 4000 direct TRINA LOM and hold.

ASOS <b>135.875</b>	CHINOOK APP CON ★ <b>133.15 379.15</b>	WALLA WALLA TOWER ★ <b>118.5 (CTAF) 289.4</b>	GND CON <b>121.6 289.4</b>	UNICOM <b>122.95</b>
------------------------	---	--	-------------------------------	-------------------------



ELEV **1194** **D** TDZE **1194**

197° to VOR/DME

REIL Rwy 2 **1**  
HIRL Rwy 2-20 **1**

2300 4000 AL

VGSI and descent angles not coincident (VGSI Angle 3.00/TCH 50).

TRINA AL LOM ALW **6.7**

Remain within 10 NM

017° 4900

197° 3200

2120\*

1.6 NM 1.4 NM 2.7 NM

ALW VOR/DME ALW **2.6** ALW **4**

\*2240 when using Pendleton altimeter setting.

JOSBO ALW **4**

3.26° TCH 50

CATEGORY	A	B	C	D
S-20	2120/40	926 (1000-¾)	2120-2	926 (1000-2)
<b>C</b> CIRCLING	2120-1¼	926 (1000-1¼)	2120-3 926 (1000-3)	2240-3 1046 (1100-3)
JOSBO FIX MINIMUMS (DME REQUIRED)				
S-20	1760/24	566 (600-½)	1760-1¼	566 (600-1¼)
<b>C</b> CIRCLING	1760-1 566 (600-1)	1820-1 626 (700-1)	2080-2¾ 886 (900-2¾)	2240-3 1046 (1100-3)