

OAK HARBOR, WASHINGTON


WAAS CH 44487 W25A	APCH CRS 249°	Rwy ldg TDZE Arpt Elev	8000 28 47
--------------------------	------------------	------------------------------	------------------

AL-451 (USN)

RNAV (GPS) RWY 25

WHIDBEY ISLAND NAS (AULT FLD) (KNUW)

⚠ * When ALS inop, increase vis to 3/4 mile.
** When ALS inop, increase vis to 1 7/8 miles.
*** When ALS inop, increase CAT AB vis to 1 mile, CAT CD vis to 1 3/4 miles.

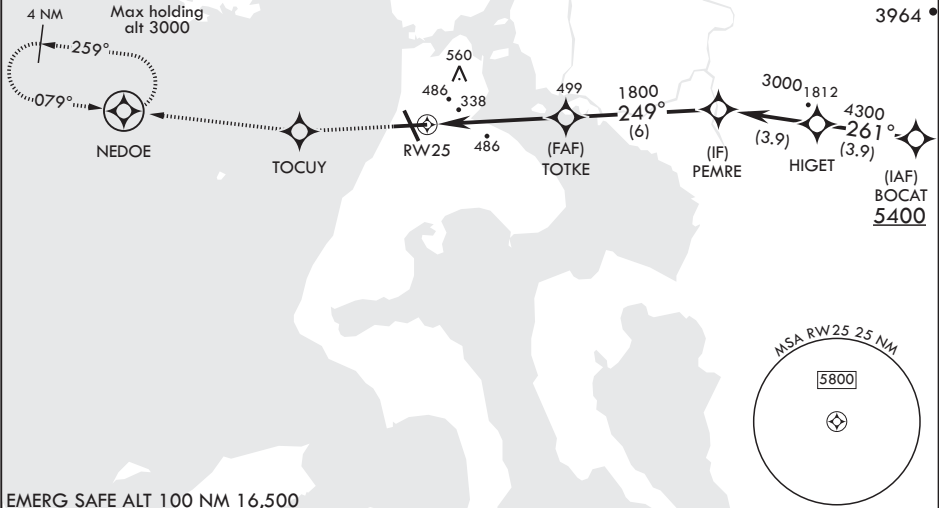
ALSF-1


MISSED APPROACH: Climb to 3000
direct TOCUY and track 259° to
NEDOE and hold, continue climb in
hold.

ATIS 134.15 281.5	APP CON/DEP CON 118.2 285.65 W 120.7 270.8 E	TOWER 127.9 340.2	GND CON 121.75 336.4	CLNC DEL 135.1 379.9	ASR/PAR
----------------------	----------------------------------------------------	----------------------	-------------------------	-------------------------	---------

DME/DME RNP-0.3 NA

For uncompensated
Baro-VNAV systems,
Procedure NA below -15°C
(5°F) or above 54°C (130°F).



3000
↑

TOCUY
✧

tr
259°

NEDOE
✧

↑ LNAV only

RW25
1.7 NM to
RW25

TOTKE
1800

PEMRE
3000

HIGET
4300

BOCAT
5400

GP 3.00°
TCH 45

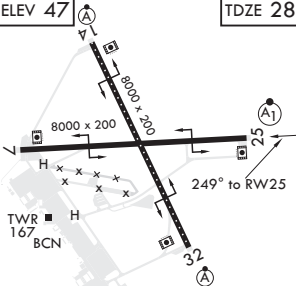
5.4 NM

249°

261°

ELEV 47
↑

TDZE 28



HIRL all Rwys
TDZL/CL Rwy 14

CATEGORY	A	B	C	D
LPV DA*	278-1/2	250	(300-1/2)	
LNAV/VNAV DA**	685-1 7/8	657	(700-1 3/4)	
LNAV MDA***	620-1/2 592	(600-1/2)	620-1 1/4 592	(600-1 1/4)
Ⓢ CIRCILING	700-1 653 (700-1)	800-1 753 (800-1)	900-2 1/2 853 (900-2 1/2)	900-2 3/4 853 (900-2 3/4)

OAK HARBOR, WASHINGTON

48°21'N - 122°39'W

WHIDBEY ISLAND NAS (AULT FLD) (KNUW)

Amndt 2 21MAY20

RNAV (GPS) RWY 25

NW-1, 03 DEC 2020 to 31 DEC 2020

NW-1, 03 DEC 2020 to 31 DEC 2020