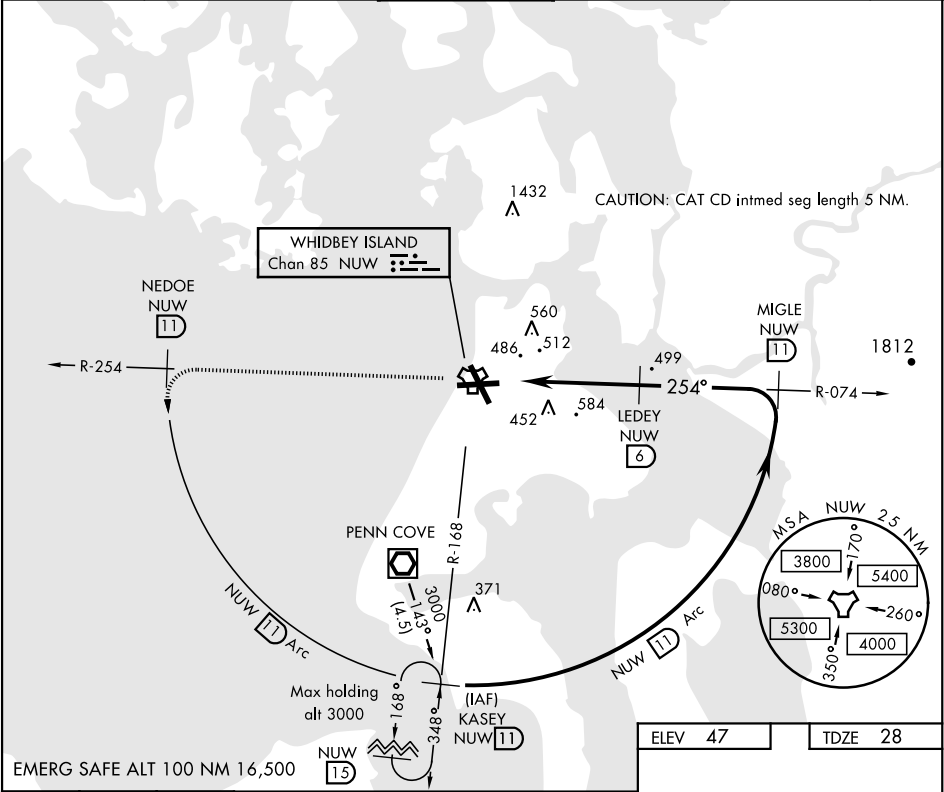
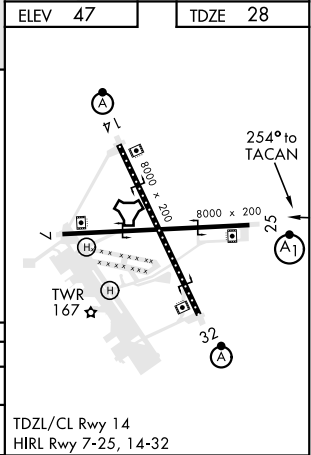


TACAN RWY 25

TACAN Chan 85	APCH CRS 254°	Rwy ldg TDZE 28 Arpt Elev 47	AL-451 [USN]	WHIDBEY ISLAND NAS (AULT FLD) (KNUW)	
* When ALS inop, increase CAT AB vis to 1 mile, CAT CD to 2 miles.			ALS F-1 	MISSED APPROACH: Climb to 3000 via NUW TACAN R-254 to NEDOE, then arc SW of NUW via 11 DME Arc to KASEY and hold.	
ATIS 134.15 281.5	WHIDBEY APP CON 120.7 270.8 118.2 285.65 EAST WEST	WHIDBEY TOWER 127.9 340.2	GND CON 121.75 336.4	CLNC DEL 135.1 379.9	ASR/PAR



3000 NUW R-254	NEDOE NUW 11	NUW 11 Arc		
CATEGORY	A	B	C	D
S-25 *	740- $\frac{5}{8}$	712 (700- $\frac{5}{8}$)	740- $\frac{1}{2}$	712 (700- $\frac{1}{2}$)
CIRCLING	760-1 713 (800-1)	800-1 753 (800-1)	900-2 $\frac{1}{2}$ 853 (900-2 $\frac{1}{2}$)	900-2 $\frac{3}{4}$ 853 (900-2 $\frac{3}{4}$)



TACAN RWY 25