

APP CRS	Rwy Idg	<b>7604</b>
<b>274°</b>	TDZE	<b>1068</b>
	Apt Elev	<b>1099</b>

# RNAV (RNP) Y RWY 27

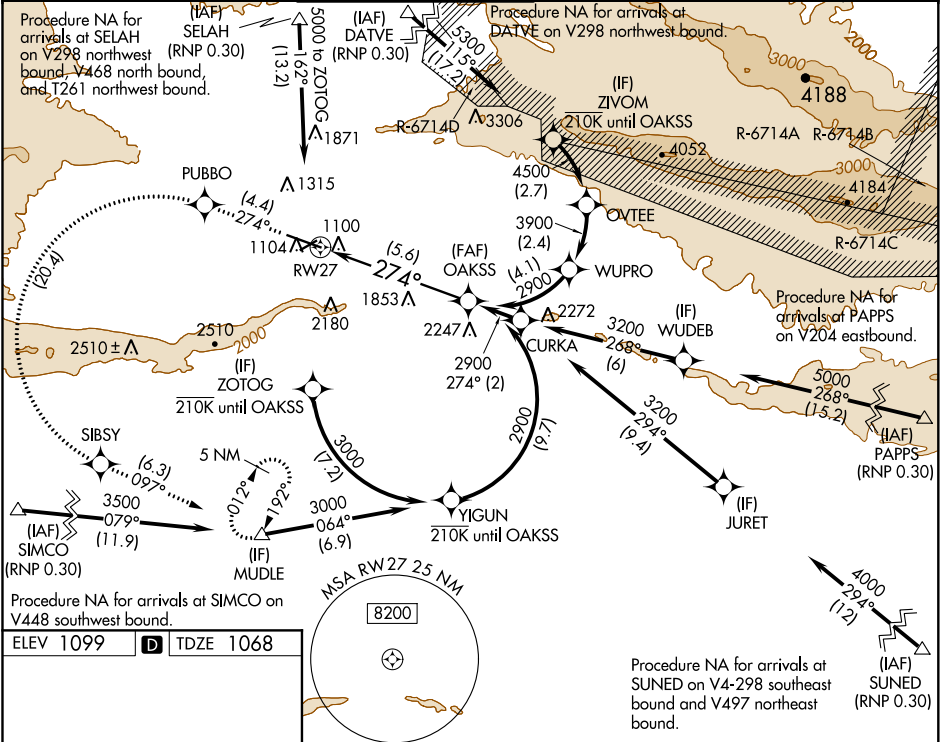
YAKIMA AIR TERMINAL/MCALLISTER FIELD (YKM)

**⚠** For uncompensated Baro-VNAV systems, procedure NA below -17°C (2°F) or above 54°C (130°F).  
RF required. GPS required. DATVE transition NA when R-6714 A, C, D active.

**MAISR**

**MISSED APPROACH:** Climb to 5100 on track 274° to PUBBO left turn to SIBSY and on track 097° to MUDLE and hold.  
\*Misted approach requires minimum climb of 425 feet per NM to 3400.





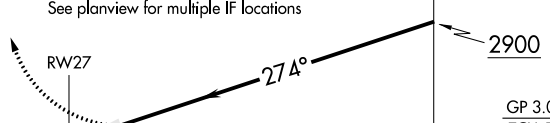
ATIS	CHINOOK APP CON★	YAKIMA TOWER★	GND CON	CLNC DEL	UNICOM
<b>125.25</b>	<b>123.8 263.15</b>	<b>133.25 (CTAF) 257.8</b>	<b>121.9</b>	<b>121.9</b>	<b>122.95</b>



ELEV 1099 **D** TDZE 1068

MIRL Rwy 4-22  
HIRL Rwy 9-27 **1**  
REIL Rwy 4, 9, and 22

TWR 1159 1119±  
1113 1114±  
7604 X 150  
3835 X 150  
274° to RW27

5100	PUBBO	SIBSY	MUDLE	OAKSS
 tr 274°			tr 097° 	2900
See planview for multiple IF locations				
				
CATEGORY	A	B	C	D
RNP 0.30 DA*	1418/30 350 (400-5%)			
RNP 0.30 DA	1845-2¼ 777 (800-2¼)			
AUTHORIZATION REQUIRED				

NW-1, 03 DEC 2020 to 31 DEC 2020

NW-1, 03 DEC 2020 to 31 DEC 2020