

VORTAC YKM 116.0 Chan 107	APP CRS 244°	Rwy Idg 7604 TDZE 1068 Apt Elev 1099
---	------------------------	---

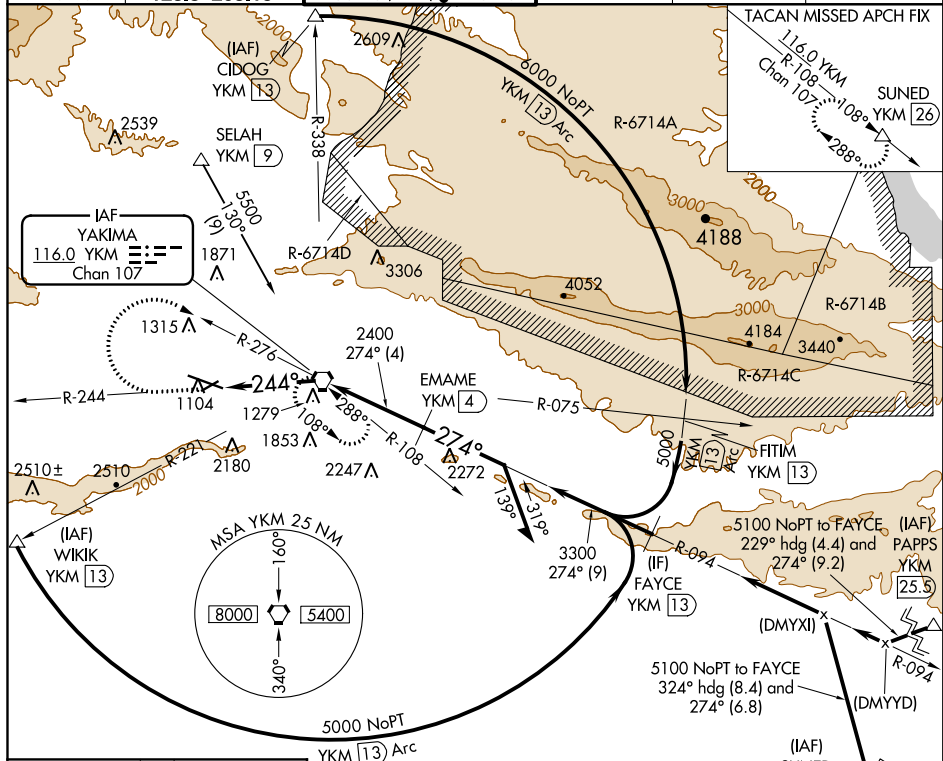
VOR/DME or TACAN RWY 27
YAKIMA AIR TERMINAL/MCALLISTER FIELD (YKM)

T	Inoperative table does not apply.
A	Circling NA south of Rwy 9-27. When local altimeter setting not received, procedure NA.

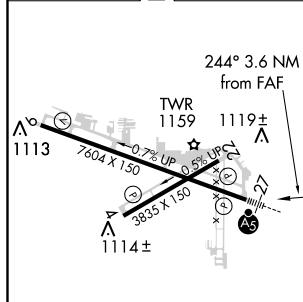


MISSED APPROACH: Climb to 2600 via YKM VORTAC R-244, then climbing right turn to 4600 via YKM VORTAC R-276 to YKM VORTAC and hold, continue climb-in-hold to 4600 (TACAN aircraft, continue climb to 5000 via YKM VORTAC R-108 to SUNED/YKM 26 DME and hold west, right turns. 108° inbound).

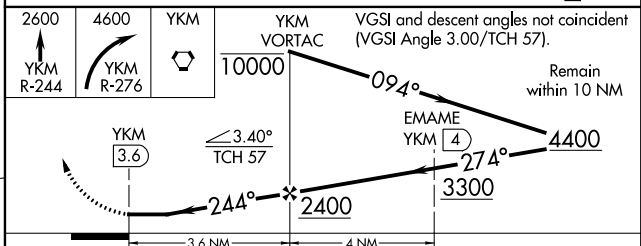
ATIS	CHINOOK APP CON ★	YAKIMA TOWER ★	GND CON	CLNC DEL	UNICOM
125.25	123.8 263.15	133.25 (CTAF) 0 257.8	121.9	121.9	122.95




ELEV 1099	D	TDZE 1068
-----------	----------	-----------



MIRL Rwy 4-22
HIRL Rwy 9-27 **L**
REIL Rwy 4, 9, and 22



CATEGORY	A	B	C	D
S-27	2100/60 1032 (1100-1¼)	2100-1½ 1032 (1100-1½)	2100-3 1032 (1100-3)	
 CIRCLING	2100-1¼ 1001 (1100-1¼)	2100-1½ 1001 (1100-1½)	2100-3 1001 (1100-3)	2280-3 1181 (1200-3)