

WAAS CH 70702 W32A	APP CRS 321°	Rwy Idg 10302 TDZE 4095 Apt Elev 4095
--	------------------------	--

RNAV (GPS) RWY 32
CRATER LAKE-KLAMATH RGNL (LMT)

RNP APCH.

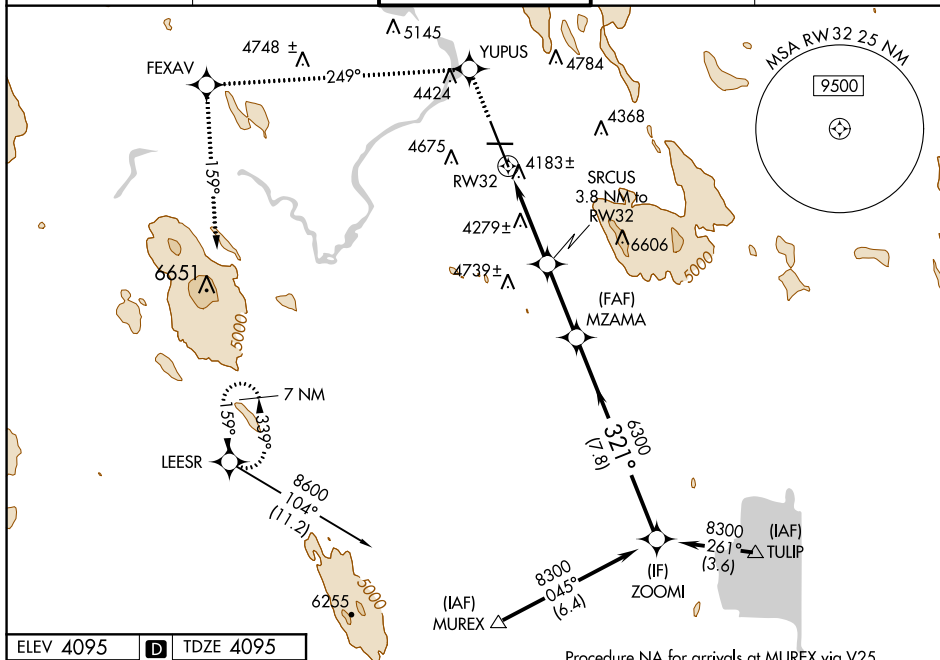
T For uncompensated Baro-VNAV systems, LNAV/VNAV NA below -23°C
A or above 41°C. For inop ALS, increase LPV all Cats visibility to RVR 5000.
 Circling NA for Cat D east of Rwy 14-32.

MALSR

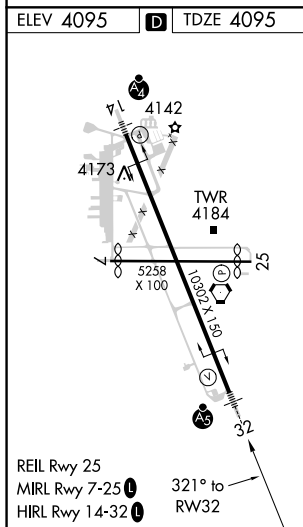
 

MISSED APPROACH: Climb to 8600 direct YUPUS and via track 249° to FEXAV and via track 159° to LEESR and hold.

ATIS 126.5 263.0	KINGSLEY APP CON 123.675 270.8	KINGSLEY TOWER ★ 133.975 (CTAF) 0 257.8	GND CON 121.9 348.6	UNICOM 122.95
---------------------	-----------------------------------	--	------------------------	------------------



Procedure NA for arrivals at MUREX via V25 southbound, and at TULIP via V452 southeast bound.



8600 ↑	YUPUS ✱	tr 249°	FEHAV ✱	tr 159°	LEESR ✱	Procedure Turn NA	
<p>* LNAV only.</p> <p>SRCUS 3.8 NM to RW32</p> <p>MZAMA</p> <p>RW32</p> <p>* 1.8 NM to RW32</p> <p>5360*</p> <p>6300</p> <p>321°</p> <p>8300</p> <p>GP 3.00° TCH 55</p>							
CATEGORY	A		B		C	D	
LPV DA	4387/24		292 (300-½)				
LNAV/VNAV DA	4674-1½		579 (600-1½)				
LNAV MDA	4720/24 625 (700-½)		4720/60 625 (700-1¼)		4720-1½ 625 (700-1½)		
CIRCLING	4840-1 745 (800-1)	4980-1¼ 885 (900-1¼)	5420-3 1325 (1400-3)		5660-3 1565 (1600-3)		