

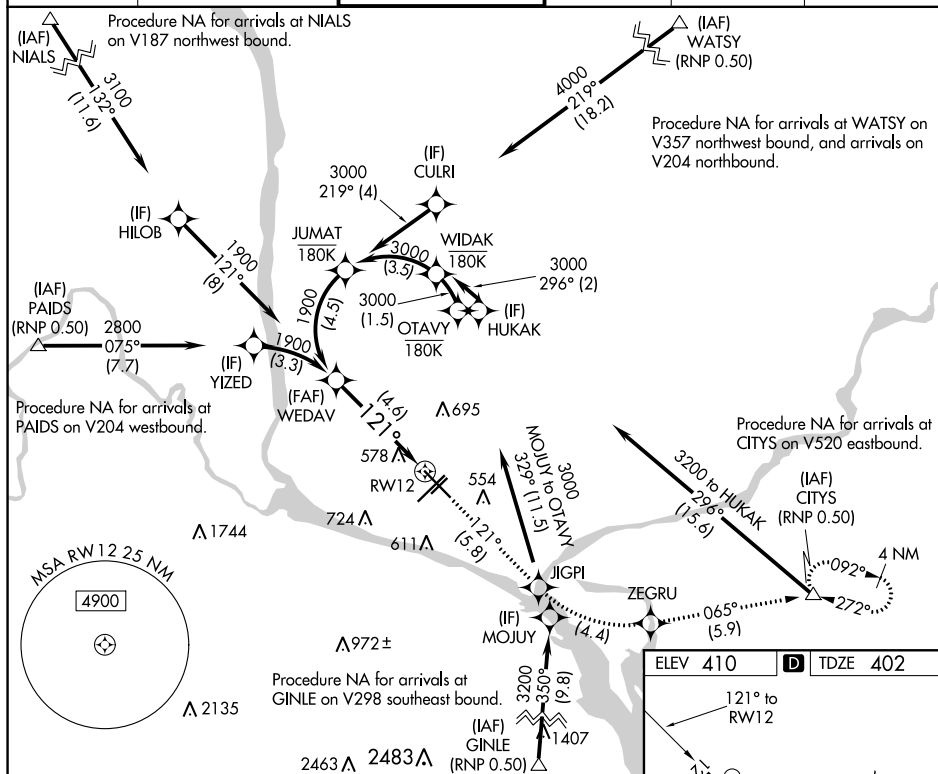
APP CRS	Rwy Idg	<b>7504</b>
<b>121°</b>	TDZE	<b>402</b>
	Apt Elev	<b>410</b>

RNAV (RNP) Z RWY 12  
TRI-CITIES (PSC)

**T** For uncompensated Baro-VNAV systems, procedure NA below -14°C (7°F) or above 54°C (130°F).  
GPS required. RF required.

**MISSED APPROACH:** Climb to 3200 on track 121° to JIGPI, left turn to ZEGRU, and on track 065° to CITYS and hold.

ATIS 125.65	CHINOOK APP CON★ 128.75 377.2	TRI-CITIES TOWER★ 135.3 (CTAF) 0 323.3	GND CON 121.8	CLNC DEL 120.0	UNICOM 122.95
----------------	----------------------------------	---	------------------	-------------------	------------------



WEDAV  
1900

1900 ↗

GP 3.00°  
TCH 54

121°

4.6 NM

RW12

See planview for multiple IF locations.

CATEGORY	A	B	C	D
RNP 0.11 DA		769-1¼	367 (400-1¼)	
RNP 0.30 DA		883-1½	481 (500-1½)	

**AUTHORIZATION REQUIRED**

