

APP CRS 301°	Rwy Idg 7504 TDZE 405 Apt Elev 410
------------------------	---

RNAV (RNP) Z RWY 30
TRI-CITIES (PSC)

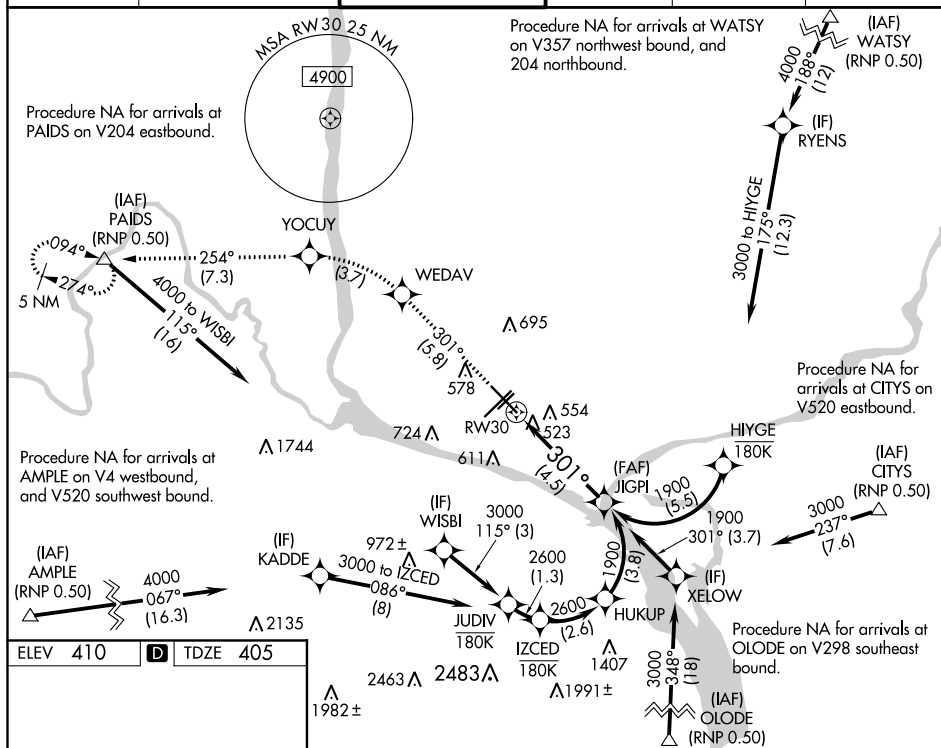
T For uncompensated Baro-VNAV systems, procedure NA below -14°C (7°F) or above 54°C (130°F). RF required. GPS required. For inoperative ODALS, increase RNP 0.11 visibility all Cats to 1½ mile, and increase RNP 0.30 visibility all Cats to 1¾ mile.

ODALS



MISSED APPROACH: Climb to 5200 on track 301° to WEDAV, left turn to YOCUY, and on track 254° to PAIDS and hold.

ATIS 125.65	CHINOOK APP CON★ 128.75 377.2	TRI-CITIES TOWER★ 135.3 (CTAF) 0 323.3	GND CON 121.8	CLNC DEL 120.0	UNICOM 122.95
----------------	----------------------------------	---	------------------	-------------------	------------------



REIL Rwy 3L and 12
MIRL Rwy 12-30
HIRL Rwy 3L-21R

5200
↑
tr 301°

WEDAV

YOCUY

PAIDS
tr 254°

JIGPI 1900

See planview for multiple IF locations.

RW30

301°

4.5 NM

GP 3.00°
TCH 54

CATEGORY	A	B	C	D
RNP 0.11 DA	778-1 1/8	373 (400-1 1/8)		
RNP 0.30 DA	834-1 1/4	429 (500-1 1/4)		

AUTHORIZATION REQUIRED

RNAV (RNP) Z RWY 30