

WAAS CH <b>58006</b> <b>W12A</b>	APP CRS <b>121°</b>	Rwy Idg <b>7504</b> TDZE <b>402</b> Apt Elev <b>410</b>
--	------------------------	---

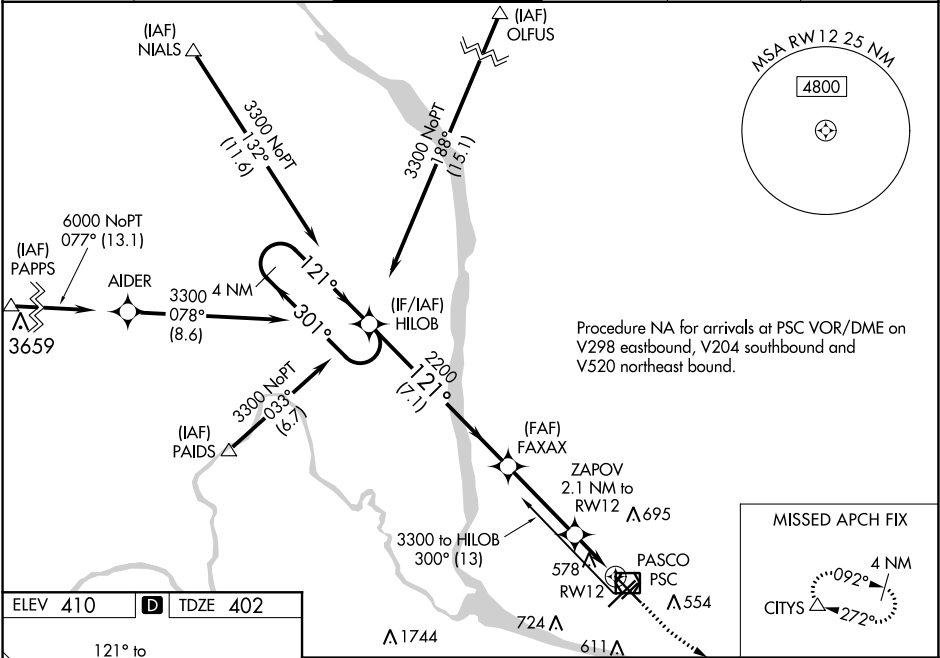
RNAV (GPS) Y RWY 12

TRI-CITIES (PSC)

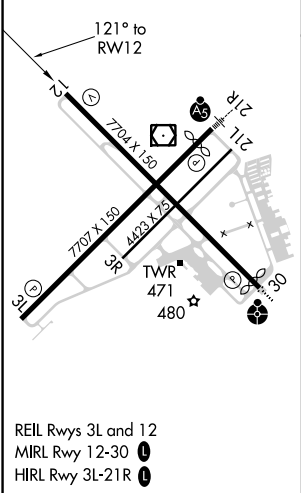
**⚠** Baro-VNAV NA when using Hermiston altimeter setting. For uncompensated Baro-VNAV systems, LNAV/VNAV NA below -14°C (7°F) or above 54°C (130°F). DME/DME RNP-0.3 NA. VDP NA with Hermiston altimeter setting. When local altimeter setting not received, use Hermiston altimeter setting: increase all DA 95 feet and all MDA 100 feet. Increase LPV all Cats visibilities ½ mile; LNAV/VNAV all Cats visibilities ⅓ mile; increase LNAV and Circling Cats C and D visibility ¼ mile.

**MISSED APPROACH:**  
Climb to 900 then climbing left turn to 3200 direct CITYS and hold.

ATIS <b>125.65</b>	CHINOOK APP CON* <b>128.75 377.2</b>	TRI-CITIES TOWER* <b>135.3 (CTAF) 0 323.3</b>	GND CON <b>121.8</b>	CLNC DEL <b>120.0</b>	UNICOM <b>122.95</b>
-----------------------	---	--	-------------------------	--------------------------	-------------------------



ELEV 410	<b>D</b>	TDZE 402
----------	----------	----------



4 NM Holding Pattern		HILOB	FAXAX	ZAPOV 2.1 NM to RW12	CITYS
3300 ← 301°		121° →	121°	2200	900
GP 3.00° TCH 54				*1100	3200
				*1.2 NM to RW12	△
				RW12	
				7.1 NM	
				3.4 NM	
				0.9 NM	
				1.2 NM	
CATEGORY	A	B	C	D	
LPV DA	602-¾ 200 (200-¾)				
LNAV/VNAV DA	755-1½ 353 (400-1½)				
LNAV MDA	840-1	438 (500-1)	840-1¾	438 (500-1¾)	
CIRCLING	880-1 470 (500-1)	940-1 530 (600-1)	1040-1¾ 630 (700-1¾)	1100-2¼ 690 (700-2¼)	

NW-1, 03 DEC 2020 to 31 DEC 2020

NW-1, 03 DEC 2020 to 31 DEC 2020